

CE Schedule™ Help

Parameter

Installation

Preface

Start

File

Calculator

Ahead

Invisible Mode

Shortcut Key

Security

Quality

Purchase

FAQ

Terms of Use

Contact Us

Epilogue

Word Explanation

CE: Casual Engine

Microsoft .NET Framework: It is the platform for new kind of software to run on. It is the heart of Windows operating system.

Parameter

Fee: 240.00 US dollar. Enterprises, governments and commercial organizations have to pay 100 US dollars for each computer. Individuals can use it for private use without amount limitation after purchase. This fee includes all the future update, upgrade and long-term technical support.

Version: 1.0

Operating System: It does not support Linux. It supports:

Windows 7/Vista/XP/2000/98. Vitally, it supports Windows Server 2008/2003/2000 and their R2 editions.

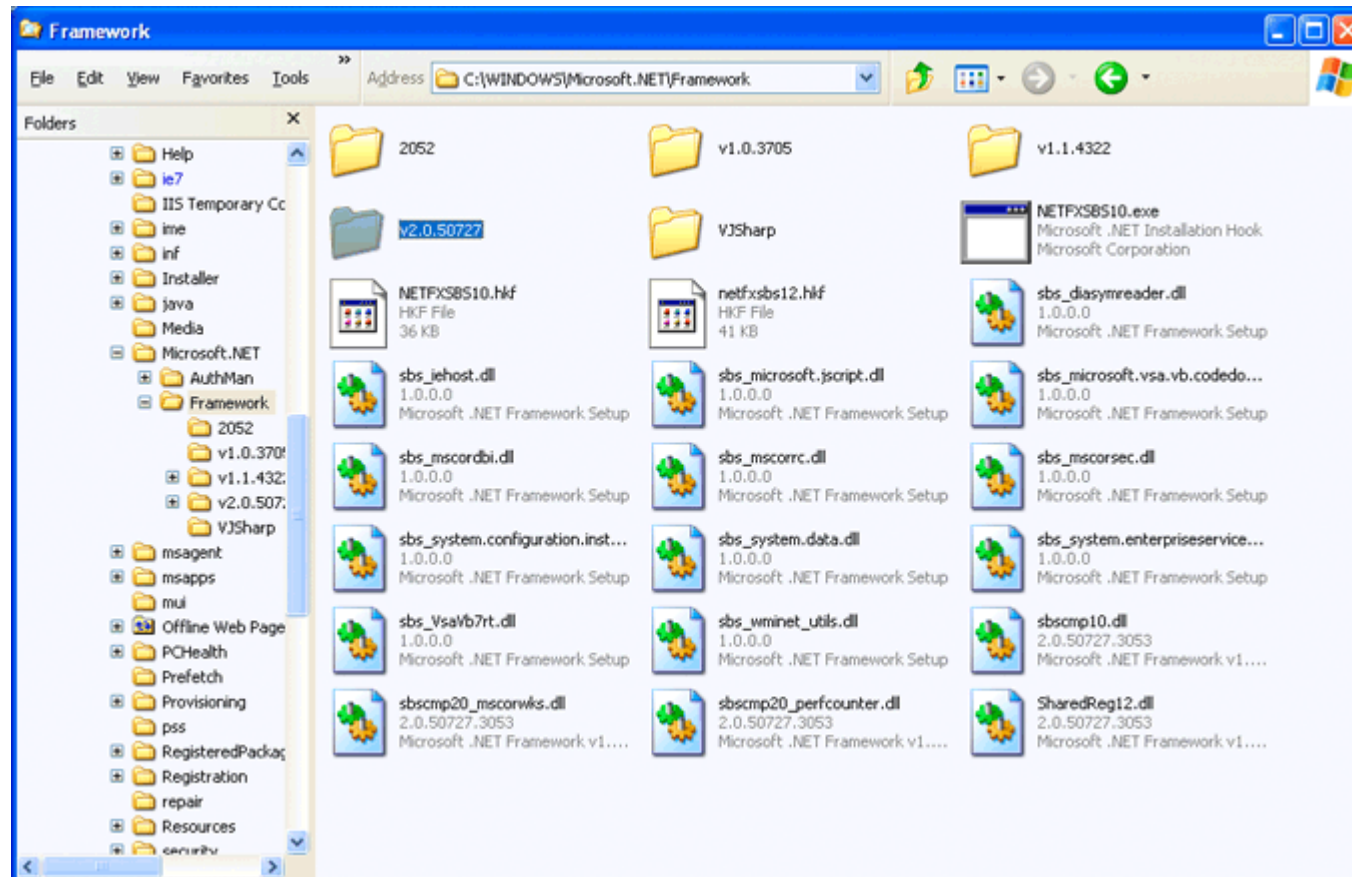
CPU: 400MHz. You can definitely run this software if your computer can start.

RAM: 14MB.

Hard Disk: 28KB. You do not have to worry about the hard disk at all.

Installation

Notice that this software requires *Microsoft .NET Framework 2.0* and SP2. You have to install them first.



To see whether your computer has already installed this platform. You can check your computer. **C:\WINDOWS\Microsoft.NET\Framework**

You can see the folder: **v2.0.50727**. If you cannot find it, you have to go to Microsoft Download Center to download and install them.

Click Here to Install Silverlight United States Change All Microsoft Sites

Microsoft Submit

Download Center

Download Center Home Search All Downloads Go Advanced Search

Product Families

- Windows
- Office
- Servers
- Business Solutions
- Developer Tools
- Windows Live
- MSN
- Games & Xbox
- Windows Mobile
- All Downloads

Download Categories

- Games
- DirectX
- Internet
- Windows Security & Updates
- Windows Media
- Drivers
- Home & Office
- Mobile Devices
- Mac & Other Platforms
- System Tools
- Development Resources

Download Resources

- Microsoft Update Services
- Download Center FAQ
- Related Sites

Download Notifications

- Notifications Signup

Worldwide Downloads

- Countries & Regions

Microsoft .NET Framework Version 2.0 Redistributable Package (x86)

Brief Description

The Microsoft .NET Framework version 2.0 (x86) redistributable package installs the .NET Framework runtime and associated files required to run applications developed to target the .NET Framework v2.0.

On This Page

- [Quick Details](#)
- [System Requirements](#)
- [Additional Information](#)
- [What Others Are Downloading](#)
- [Overview](#)
- [Instructions](#)
- [Related Resources](#)
- [Related Downloads](#)

Download

Quick Details

File Name:	dotnetfx.exe
Version:	2.0
Date Published:	1/22/2006
Language:	English
Download Size:	22.4 MB
Estimated Download Time:	Download (56K) 55 min
Change Language:	English Change

Overview

The Microsoft .NET Framework version 2.0 redistributable package installs the .NET Framework runtime and associated files required to run applications developed to target the .NET Framework v2.0.

The .NET Framework version 2.0 improves scalability and performance of applications with improved caching, application deployment and updating with ClickOnce, support for the broadest array of browsers and devices with ASP.NET 2.0 controls and services. For more information on the .NET Framework 2.0, click [here](#).

[Top of page](#)

Please download *Microsoft .NET Framework Version 2.0 Redistributable Package*. This image shows its 32 bit edition. You should download its 64 bit edition if your computer is 64 bit. This is the platform for new kind of software to run on. The URL is:

<http://www.microsoft.com/downloads/details.aspx?FamilyID=0856each-4362-4b0d-8edd-aab15c5e04f5&DisplayLang=en>

Click Here to Install Silverlight United States Change All Microsoft Sites

Microsoft Submit

Download Center

Download Center Home Search All Downloads Go Advanced Search

Product Families

- Windows
- Office
- Servers
- Business Solutions
- Developer Tools
- Windows Live
- MSN
- Games & Xbox
- Windows Mobile
- All Downloads

Download Categories

- Games
- DirectX
- Internet
- Windows Security & Updates
- Windows Media
- Drivers
- Home & Office
- Mobile Devices
- Mac & Other Platforms
- System Tools
- Development Resources

Download Resources

- Microsoft Update Services
- Download Center FAQ
- Related Sites

Download Notifications

- Notifications Signup

Worldwide Downloads

- Countries & Regions

Microsoft .NET Framework 2.0 Service Pack 2

Brief Description
Service Pack 2 for .NET Framework 2.0

On This Page
[Quick Details](#) [Overview](#)
[System Requirements](#) [Instructions](#)
[Related Resources](#) [What Others Are Downloading](#)

Download files below

Quick Details

Version:	SP2
Date Published:	1/16/2009
Language:	English
Download Size:	23.8 MB - 122.3 MB*

*Download size depends on selected download components.

Change Language: English Change

Overview
The .NET Framework 2.0 Service Pack 2 provides cumulative roll-up updates for customer reported issues found after the release of the .NET Framework 2.0. In addition, this release provides performance improvements, and prerequisite feature support for the .NET Framework 3.5 Service Pack 1.

Please review the supported operating systems for this deployment package in the System Requirements section. The corresponding updates for Windows Vista and Microsoft Windows 2008 are deployed via the full .NET Framework 3.5 service pack 1.

[Top of page](#)

System Requirements

- **Supported Operating Systems:** Windows Server 2003; Windows XP
- **Processor:** 400 MHz Pentium processor or equivalent (Minimum); 1GHz Pentium processor or equivalent (Recommended)
- **RAM:** 96 MB (Minimum); 256 MB (Recommended)

Then, you have to download its SP2: *Microsoft .NET Framework 2.0 Service Pack 2*. The URL is:
<http://www.microsoft.com/downloads/details.aspx?FamilyID=5b2c0358-915b-4eb5-9b1d-10e506da9d0f&DisplayLang=en>

Tip: *Microsoft .NET Framework 2.0* and SP2 are extremely important for new kind of software. CE strongly recommends you to save them in your flash drive and portable hard disk. You do not have to

access the Internet and download them repeatedly, if you use other computers. Many computers have not yet installed them by default.



After installation of the *Microsoft .NET Framework 2.0 SP2* platform, you can unpack the .zip file and open the folder. It has two editions: *USB* and *Installation*.

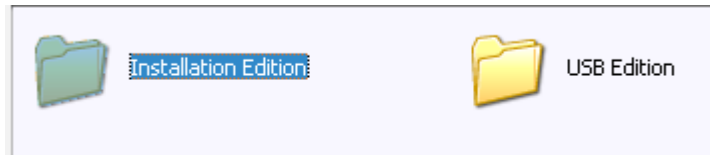
The USB edition does not require installation at all. You can simply click **CE Schedule.exe** to run this software. It does not write data into Windows Registry or hard disk at all. It just runs on the memory temporarily. Besides, after closing the software, it will be totally removed from your computer.



It supports 32 and 64 bit systems at the same time.

It does not contain icons. Therefore, it uses the default icon of *Windows* operating system. Indeed, it looks ugly. You should complain about Microsoft Corporation. Note that it is not virus. You should not mistake it later. You should save it in your flash drive or portable hard disk.

The USB edition is quite useful if you use other people's computers. It is impolite to install software in computers of your friends. Similarly, you may not be allowed to install any software in office or other public computers, because these computers have been locked. You can still use this software if you use the USB edition. Definitely, to use this software, you have to persuade the owners to install the *Microsoft .NET Framework 2.0 SP2* platform first.



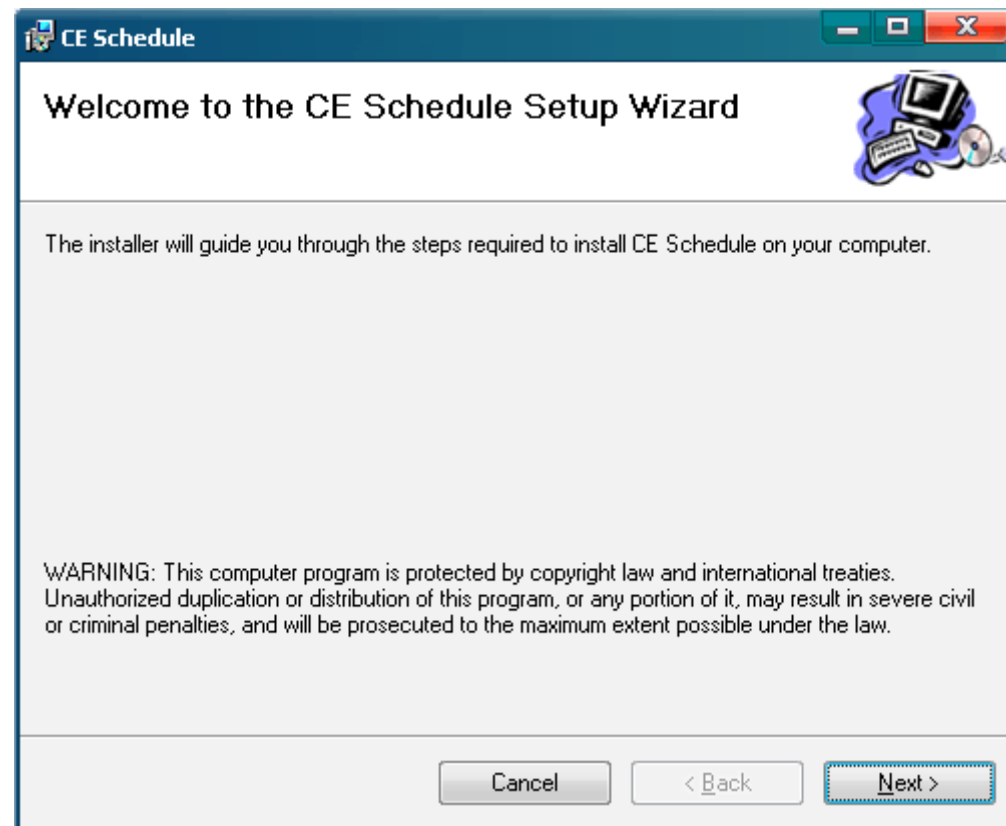
Definitely, you can install the software directly, if you are using your own computer.



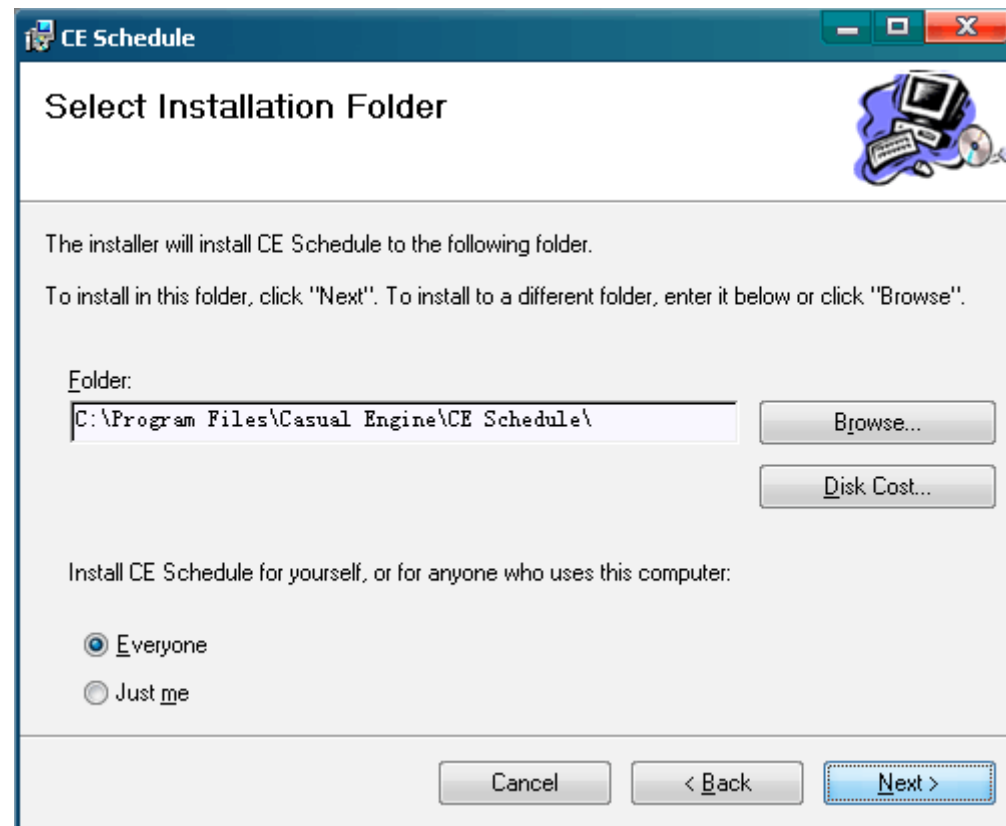
Then, you have to choose the system first. x86 means 32 bit while x64 means 64 bit.



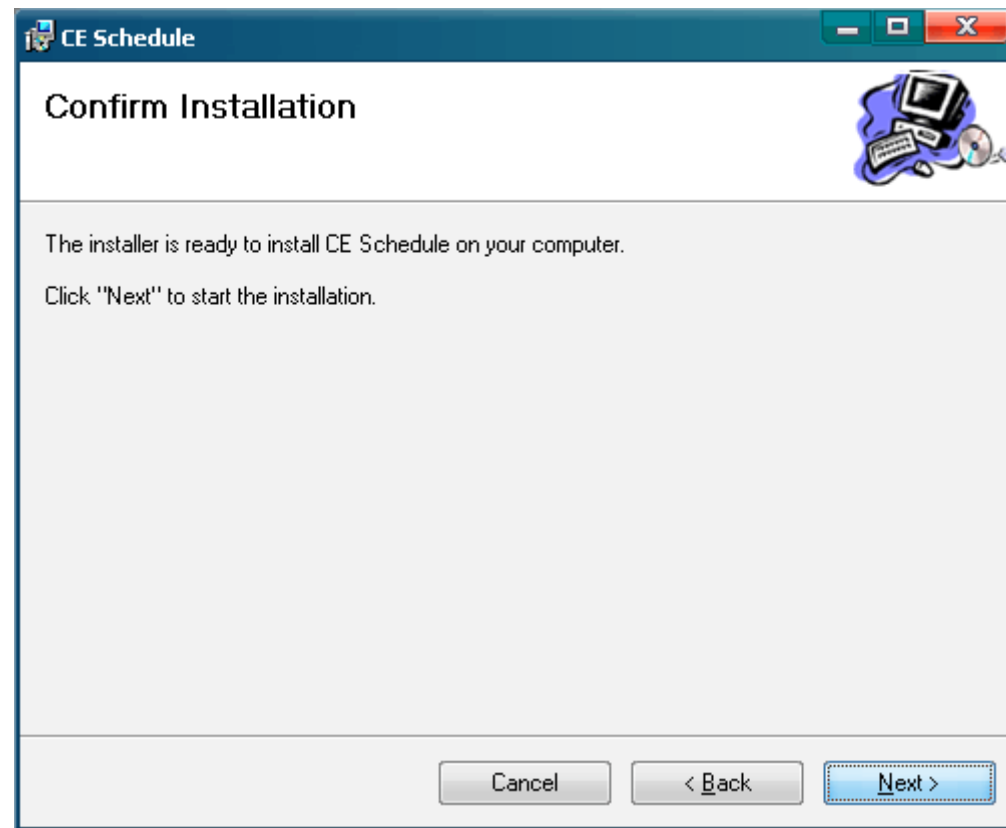
For example, you can click **Setup86.msi** to install it if your computer is 32 bit.



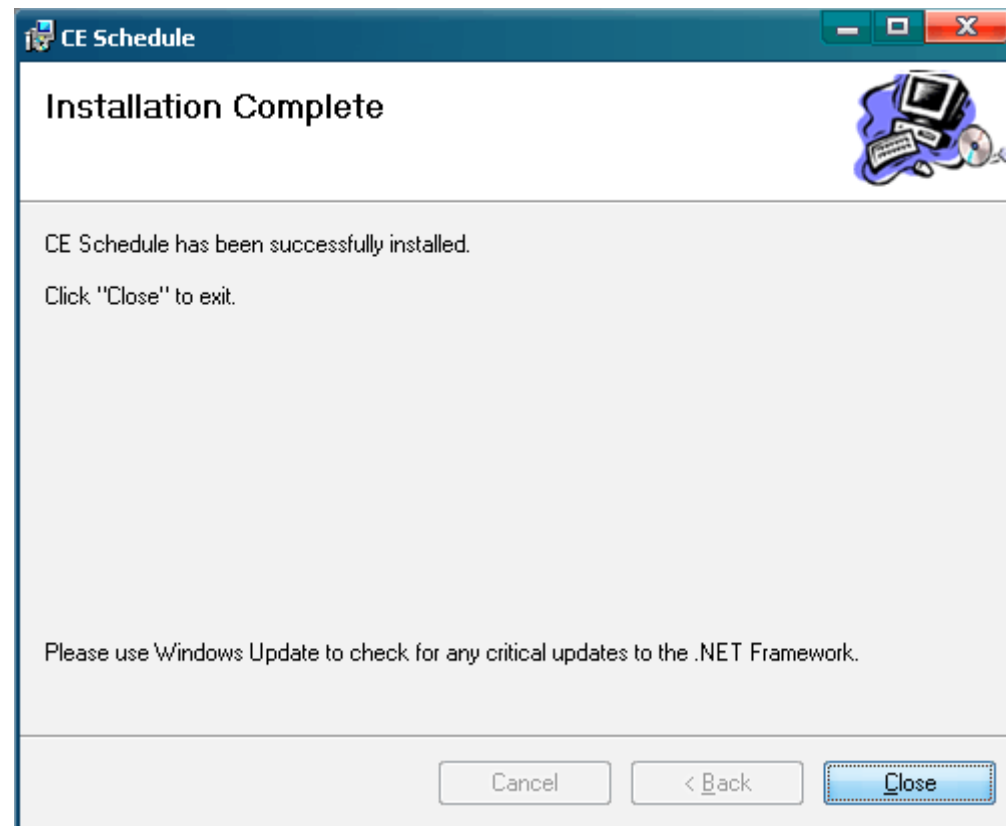
This is the wizard of installation. Click "Next" button.



Usually, you do not have to change the folder. Besides, everyone can use it by default. Click “Next” button again.



Finally, you can click "Next" button to start installation.



After installation, you can close this wizard. It has been installed in your computer successfully. You can start the software on [Start] menu.

Preface

Much schedule software is on the market, but little is really useful. For example, you may need to set the schedule in the software like:

Meeting	09:00~10:30
Print files	10:30~10:40
Reply emails	10:40~11:20
Call Clients	11:20~11:40

The disadvantages include:

- 1.** After setting the schedule, you can hardly modify it. For example, if the starting time of the meeting are delayed or earlier, you have to delete all the time of following events and remake a new schedule.
- 2.** You may not know the end time of some events. Meetings are typical examples. However, the software does not allow you to set the next event, if you do not set the accurate end time of last event.

3. In real life, you can do several things at the same time. For example, you can quit the last event earlier and do the next event earlier. Besides, you can print files, call your clients and even drink coffee at the same time. However, the software only allows you to do things one by one.

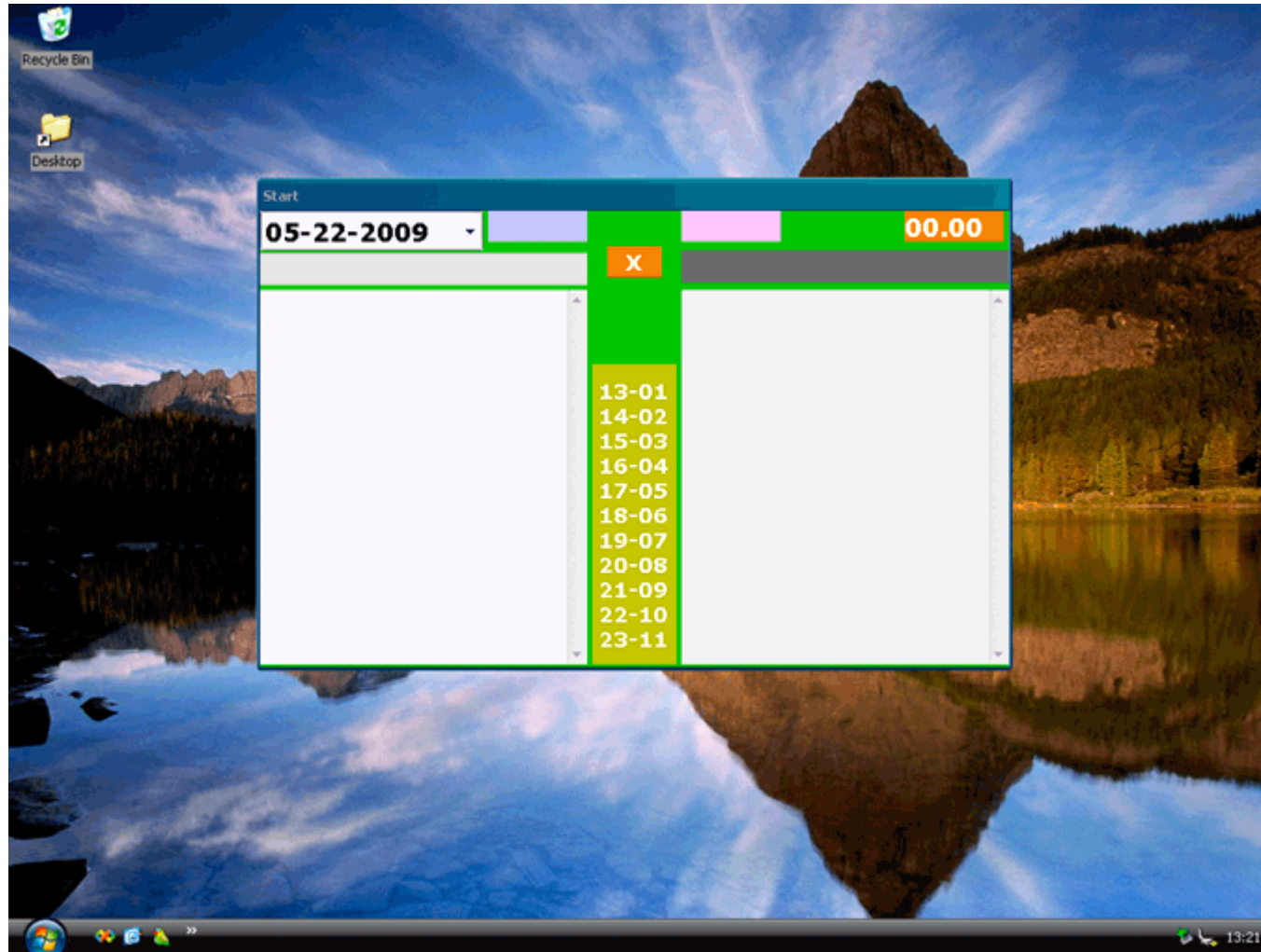
4. The software stores data inside the software. Your computer in the office may not allow you to install software freely. As a result, you cannot create the schedule at home and then use it in office the next day.

5. The software cannot remind you ahead. If a meeting starts at 14:00, and you may need to spend thirty minutes driving there, you do not know you should set the time at 13:30 or 14:00.

This kind of software is designed for robots, not for human beings.

CE Schedule™ is quite different. It allows to to modify the schedule at any time. Besides, it does not require end time, and you can do several things at the same time. Finally, the data is inside the .rtf and .txt files, not inside the software. As a result, you can use the schedule through your cell phone and all kinds of computers. You do not have to install the software anywhere.

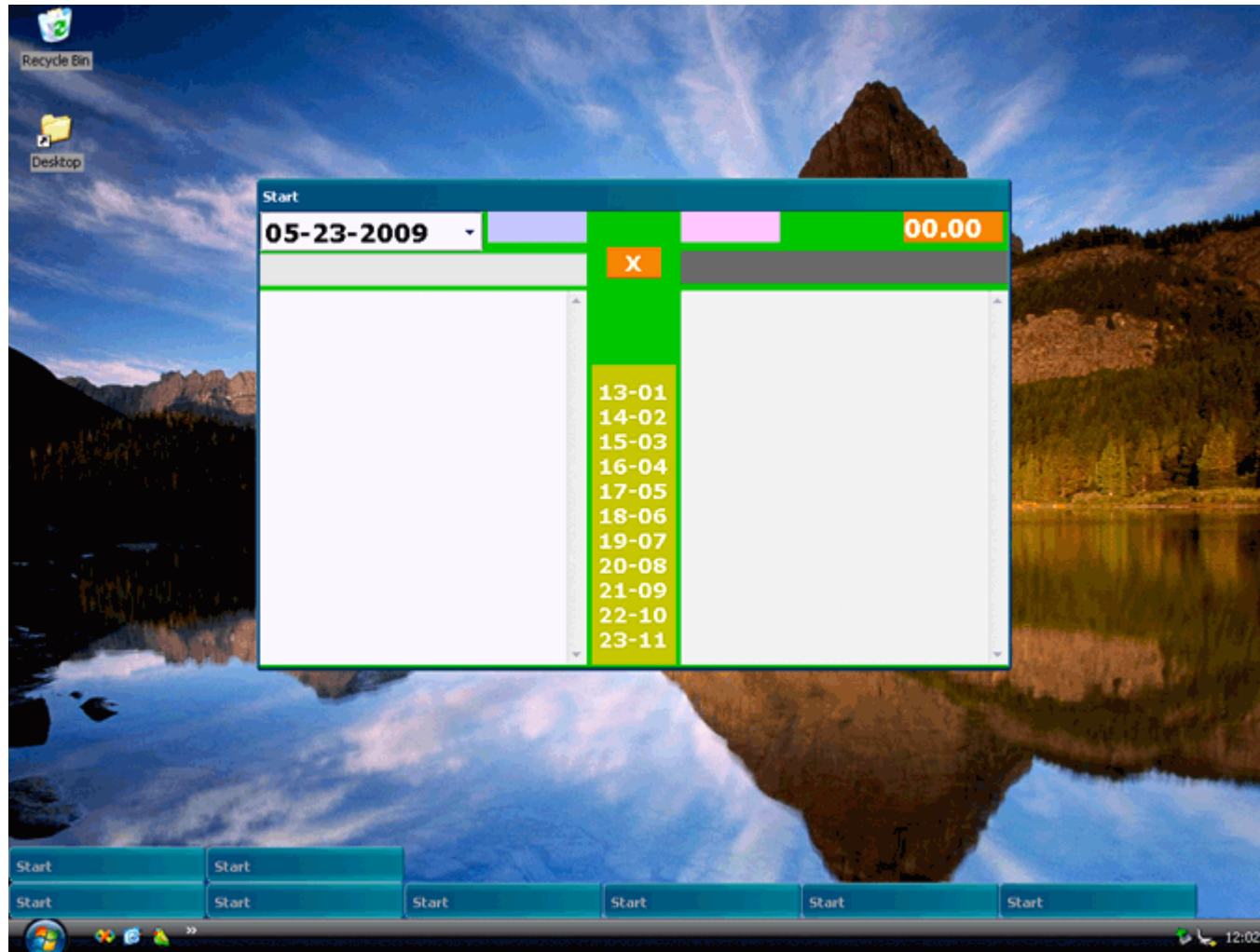
Start



It looks complex. In fact, it just have three functions. Creating files, calculating time, and setting the alarm.



Tip: You can double-click or press **<Ctrl+M>** key to minimize the window.



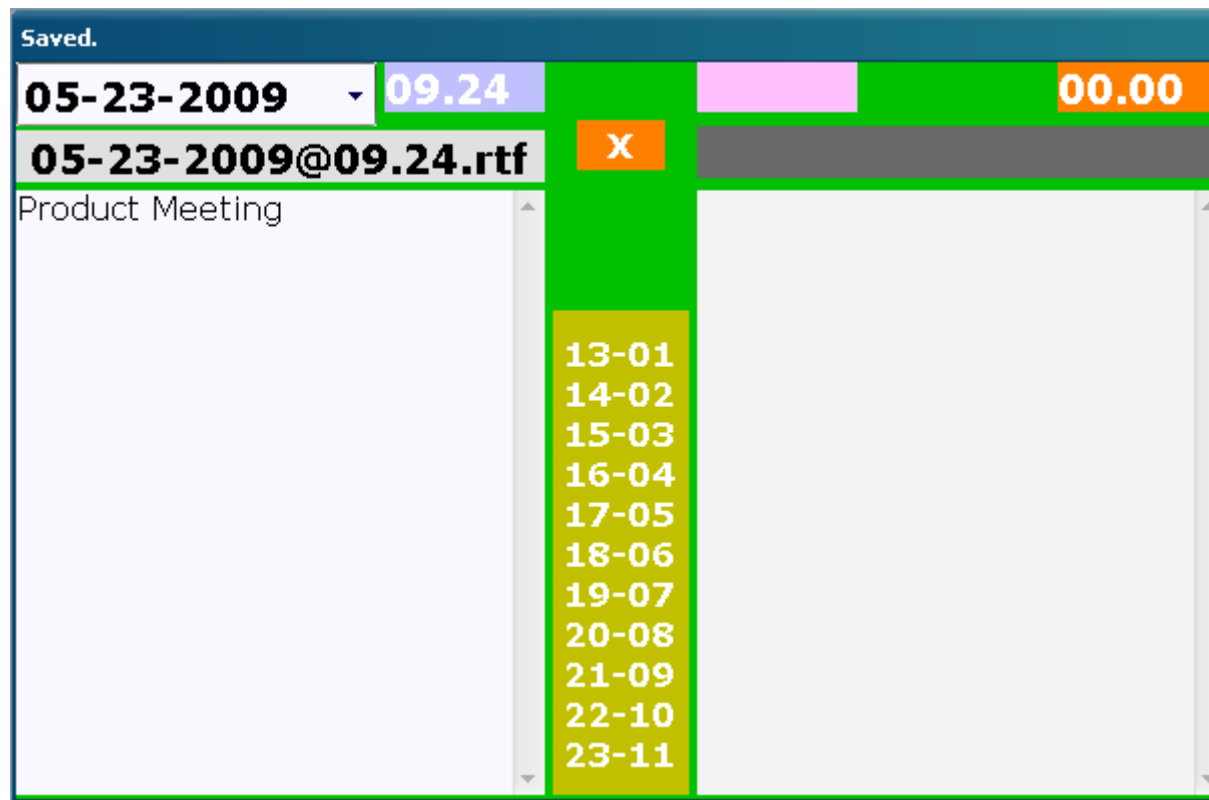
It supports multiple windows. Multiple windows are quite useful. You can create many events at the same time. As a result, you can allocate different time with ease. Besides, you can use many alarms to remind you for several times.

File

The screenshot shows a software interface for creating a file. At the top, a blue bar contains the word "Start". Below this, there are several input fields: a date field showing "05-23-2009" with a dropdown arrow, a time field showing "09.24", a pink rectangular field, and an orange field showing "00.00". Below these is a gray bar containing the filename "05-23-2009@09.24.rtf" and an orange button with a white "X". The main area is divided into three sections: a light blue box on the left containing the text "Product Meeting", a central yellow box containing a list of times from "13-01" to "23-11", and a large light gray box on the right. All three main sections have vertical scrollbars.

To create a file, you can choose the date in the calendar box. Then, enter the starting time in the upper blue box. Press **<Enter>** key, the gray box will show the filename. gray

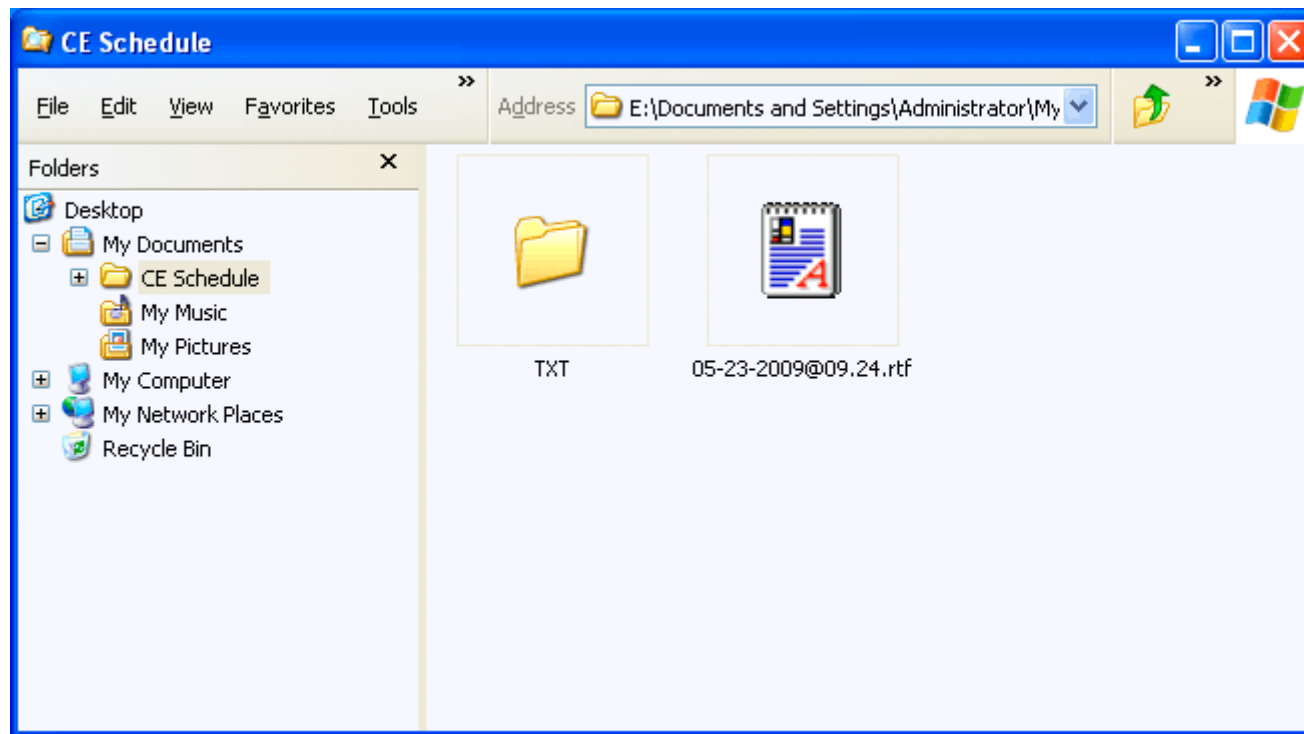
Notice: The time format use "." instead of ":". Besides, it uses 24 hours, not 12 hours. You can see the list box below. It shows the PM of 24~12 hours. As a result, you can set the time correctly. Finally, you have to use double digits. For example, "08.04" is correct, but "8.4" is incorrect.



Finally, press **<Ctrl+S>** key to save the file. The title bar will give you the tip after saving to the hard disk.

The location of the file will be:

My Documents\CE Schedule



It will create the .rtf file. Besides, it will create the .txt file at the same time. The .txt files are used for some smart phones, which do not support .rtf files.

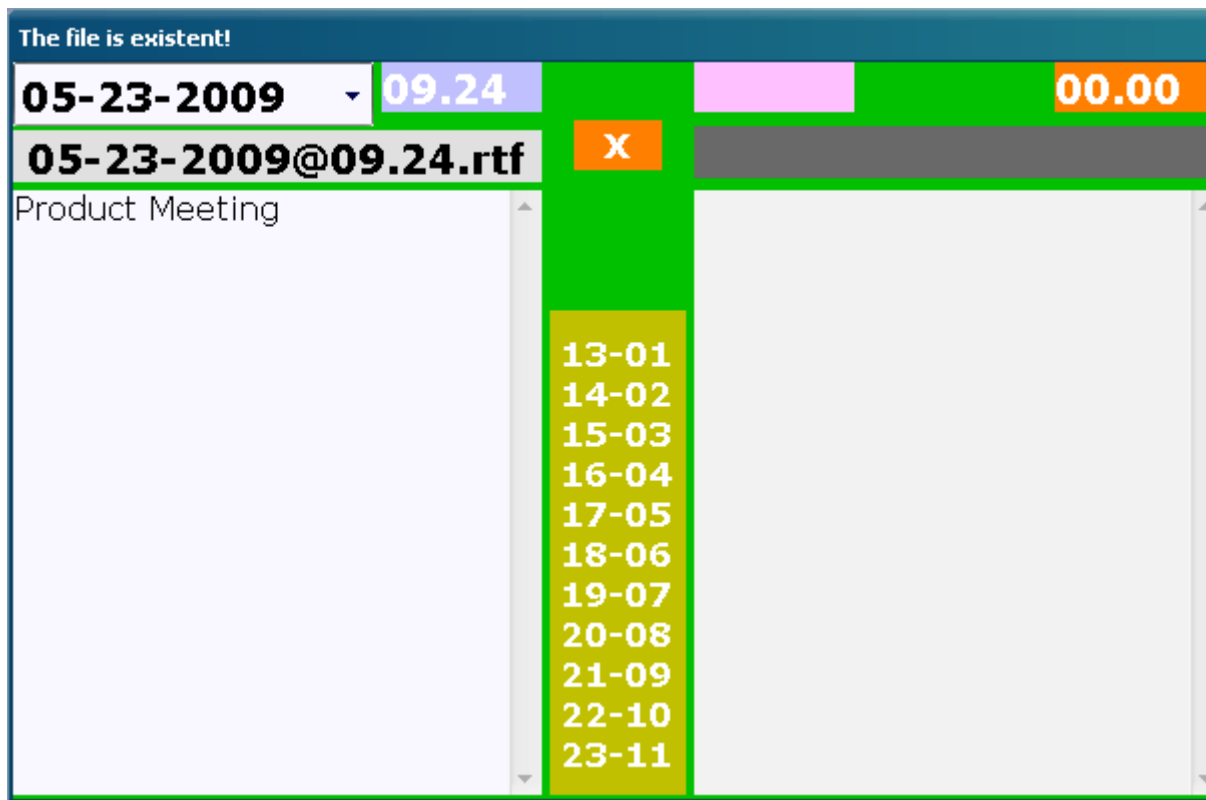
In fact, you can create the file by hand. You just need to guarantee the correct format of the filename:

Month-Day-Year@Hour.minute.rtf

Vitally, you can edit the content of the file at any time. You can simply double-click the file, and edit it in *Windows WordPad*. Alternatively, you can open the file with *Microsoft Word* or *OpenOffice* and edit it, if the contents contain tables, images or other complex formats.

This is the significant feature. You can directly write down useful data inside the .rtf files. Other schedule software cannot do it at all.

Tip: To backup the files, you can copy the folder of *CE Schedule* to your portable hard disk or flash drive.



This software has a protection mechanism inside. If the file has been created, the software will not save the current content. It prevents covering your previous events and data.

Note: It does not check the .txt files. It just checks the .rtf files. The .txt files will be covered directly.

Saved.

05-23-2009	09.24			00.00
05-23-2009@09.24.rtf		X		
Saturday End Time:				
Product Meeting				
	13-01			
	14-02			
	15-03			
	16-04			
	17-05			
	18-06			
	19-07			
	20-08			
	21-09			
	22-10			
	23-11			

Tip: You can insert the day of week by pressing **<Ctrl+W>** key. Besides, it will add "End Time" behind. You can leave it empty, if you do not know the end time.

Calculator

09.24+02.50=12.14 02.50-09.24=-06.3

05-23-2009	09.24	02.50	00.00
05-23-2009@09.24.rtf		X	
Saturday End Time:			
Product Meeting			
	13-01		
	14-02		
	15-03		
	16-04		
	17-05		
	18-06		
	19-07		
	20-08		
	21-09		
	22-10		
	23-11		

Usually, you can only know or plan the starting time of events. Sometimes, you know the time span but do not know the end time. Alternatively, you know the end time, but do not know the time span. As a result, a calculator is quite useful.

In this case, you can enter the time span or end time in the upper pink box, and then press

<Enter> key. It calculates the time for you. The result will be displayed in the title bar.

18.40+06.38=01.18

06.38-18.40=-12.0

05-23-2009

18.40

06.38

00.00

05-23-2009@09.24.rtf

X

Saturday End Time:

Product Meeting

13-01

14-02

15-03

16-04

17-05

18-06

19-07

20-08

21-09

22-10

23-11

Note: The end time can exceed 24 hours. It means that it will reach next day. You have to judge it by yourself. Usually, it is quite simple. The result of starting time and time span will be mostly smaller than the summation. In this case, you can know that it the end time will appear in the next day. Besides, you can simply judge it according to your experience.

Ahead

Usually, you have to be ahead before the starting each important events. You need the software to remind you several minutes earlier. As a result, you can have enough time to prepare the data, or even drive there.

Notice: The alarm only gets the data from .rtf files. It does not check the .txt files.

Saved.

05-24-2009 ▾	16.00			00.00
05-24-2009@16.00.rtf		X		
Print files				
	13-01			
	14-02			
	15-03			
	16-04			
	17-05			
	18-06			
	19-07			
	20-08			
	21-09			
	22-10			
	23-11			

CE Schedule™ satisfies your demand. The alarm reminds you at the time, you set starting time of the file name. However, you can set the alarm to remind you earlier .

Tip: The second of the alarm is not fixed in "00". It depends on the time you start the software. Besides, you do not have to press **<Enter>** key. It will check it automatically. Finally, the alarm use system sound, not music. As a result, it can be used in office.

Start

05-23-2009

00.15

X

05-23-2009@16.00

Print files

13-01

14-02

15-03

16-04

17-05

18-06

19-07

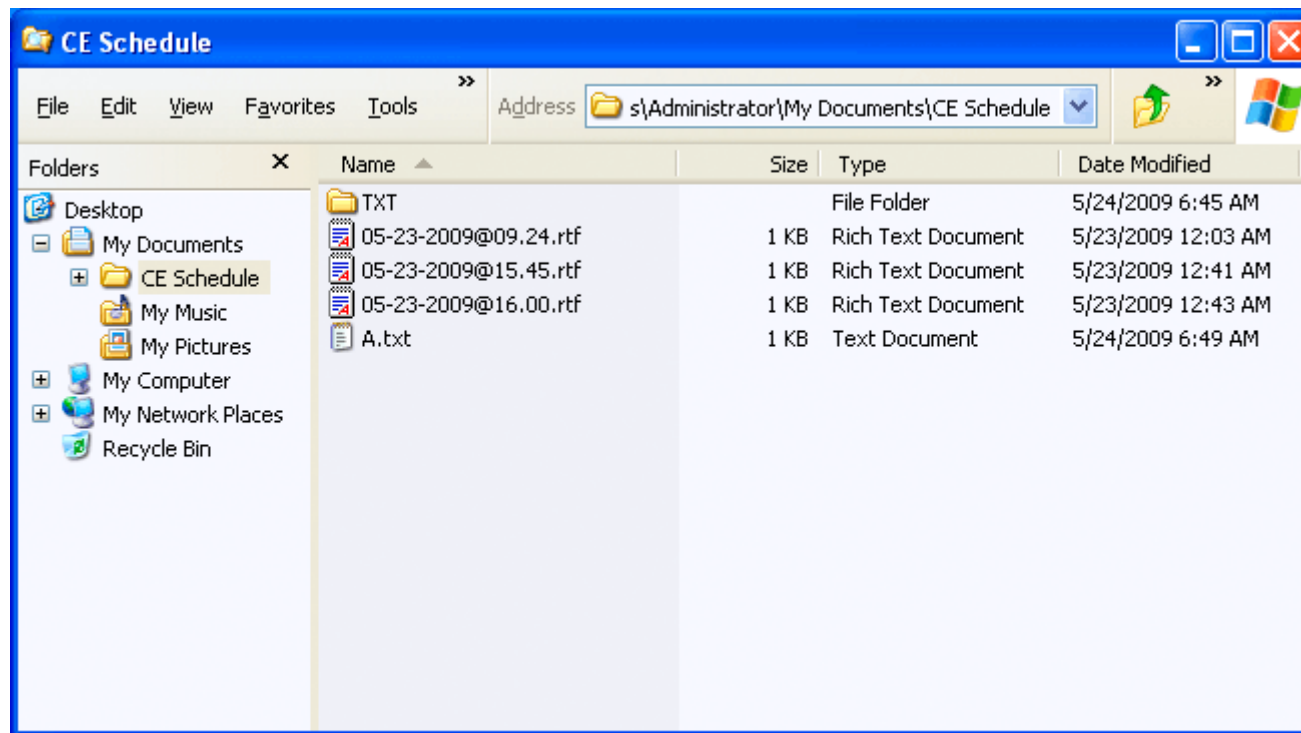
20-08

21-09

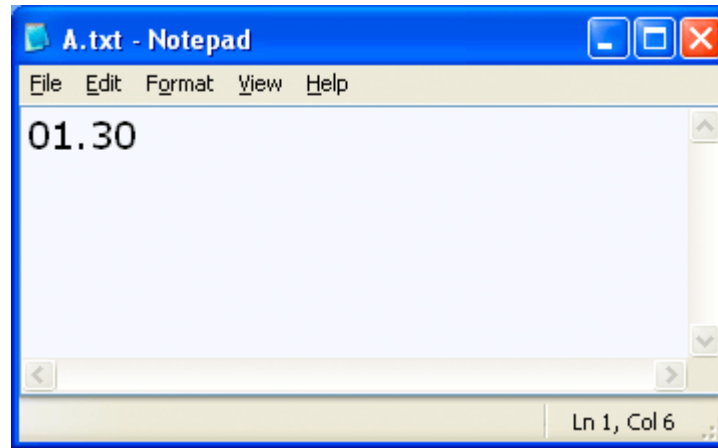
22-10

23-11

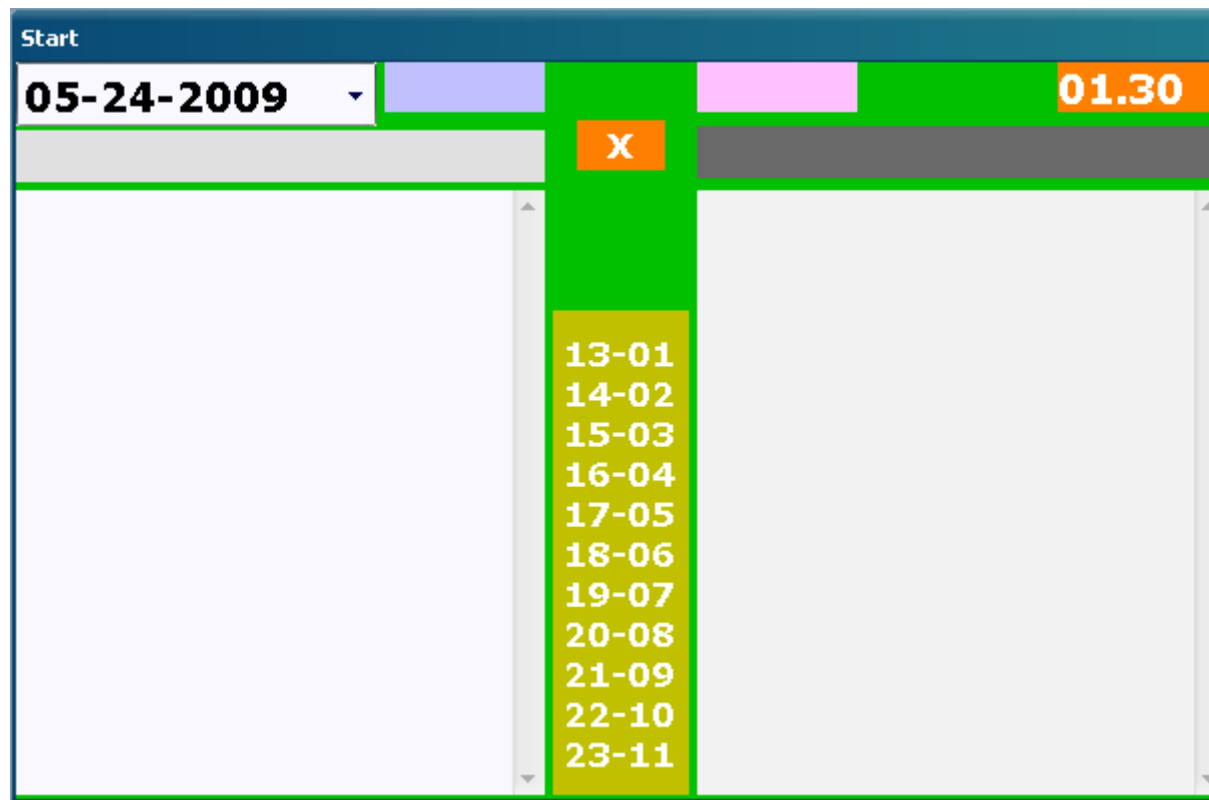
For example, you plan to print files at 16:00. To remind you earlier, you can set the alarm fifty minutes ahead. You will hear the system sound at 15:45.



You can create A.txt and write down the ahead time inside **My Documents\CE Schedule**, if you are used to be several minutes earlier for each events. The content of A.txt file is the default time of the alarm.



For example, you can write down "01.30". It means that one hour and thirty minutes ahead.

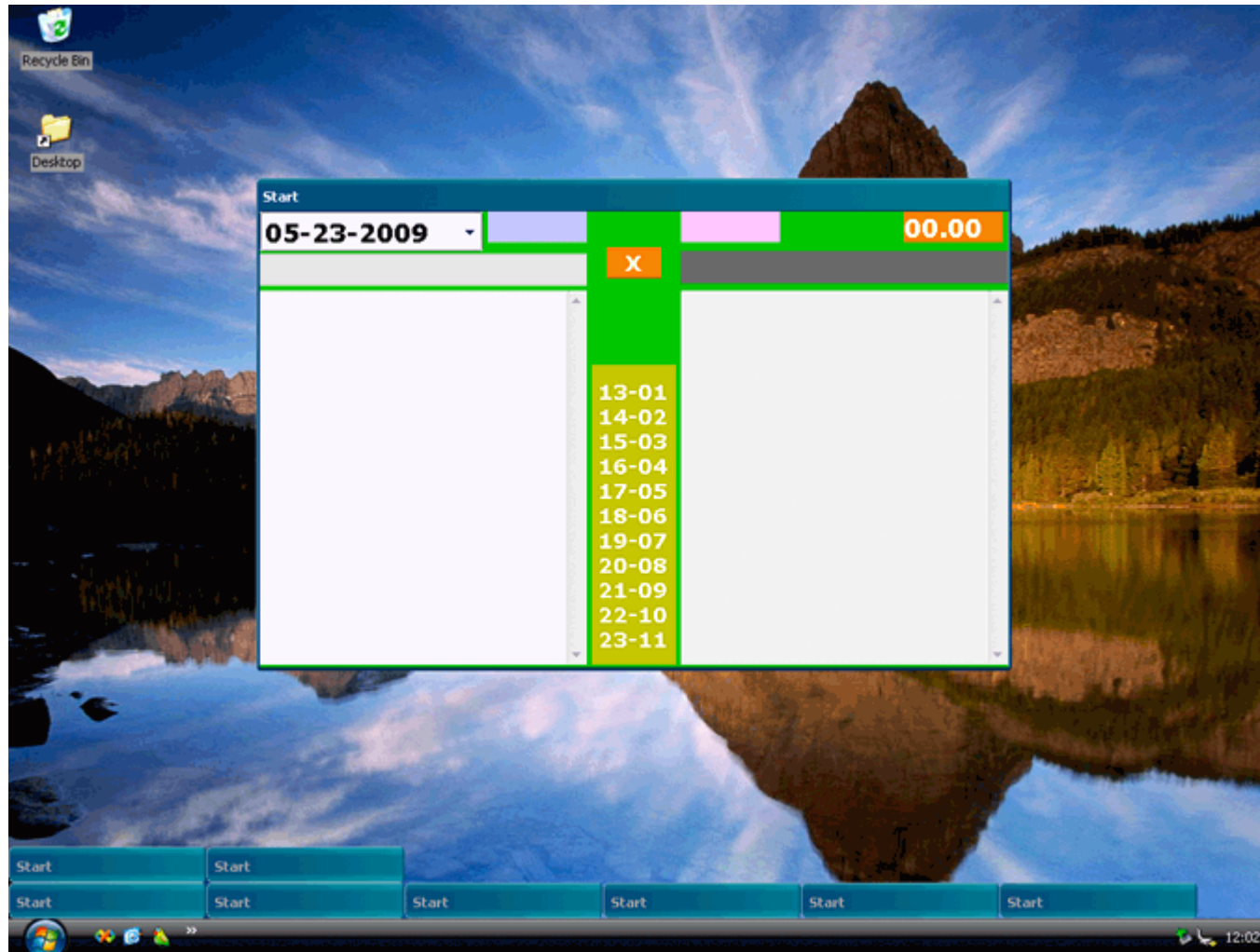


Then, double-click the upper orange box or press **<Ctrl+R>** key. It will load the content of A.txt. Besides, every time the software starts, it will load the content of A.txt automatically.

Notice: You have to press **<Tab>** key to move the cursor to the ahead box first. It prevents misoperation.

Invisible Mode

Sometimes, you need to leave your computer for a while. You may have to get reports, drink coffee, or go to toilet temporally. Definitely, you do not want others to see your contents, because they may be sensitive.

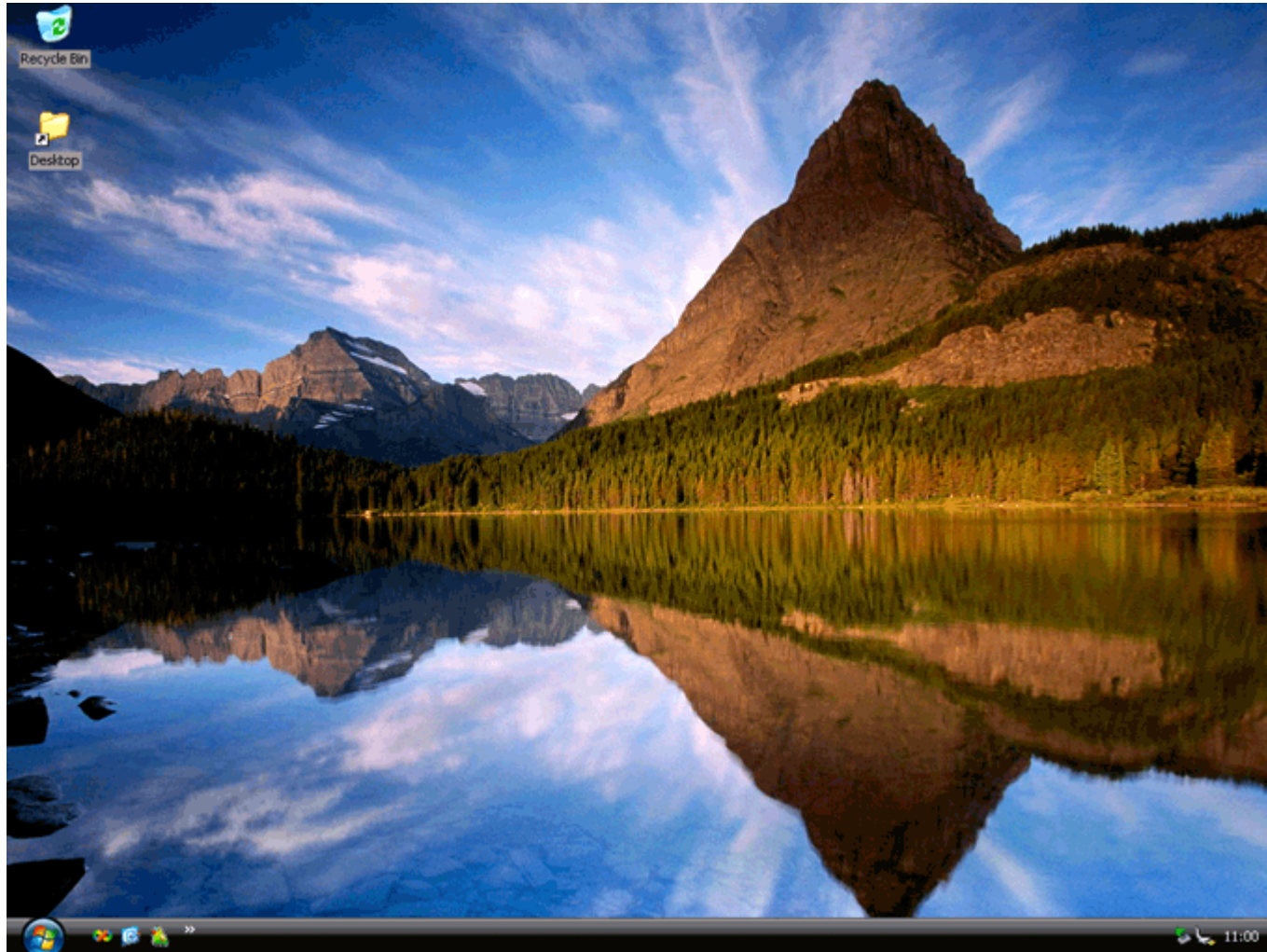


In this case, you do not have to save the contents and exit the program, and then restart the program and continue to edit the contents. Through the invisible mode, you can hide all the windows behind the desktop.

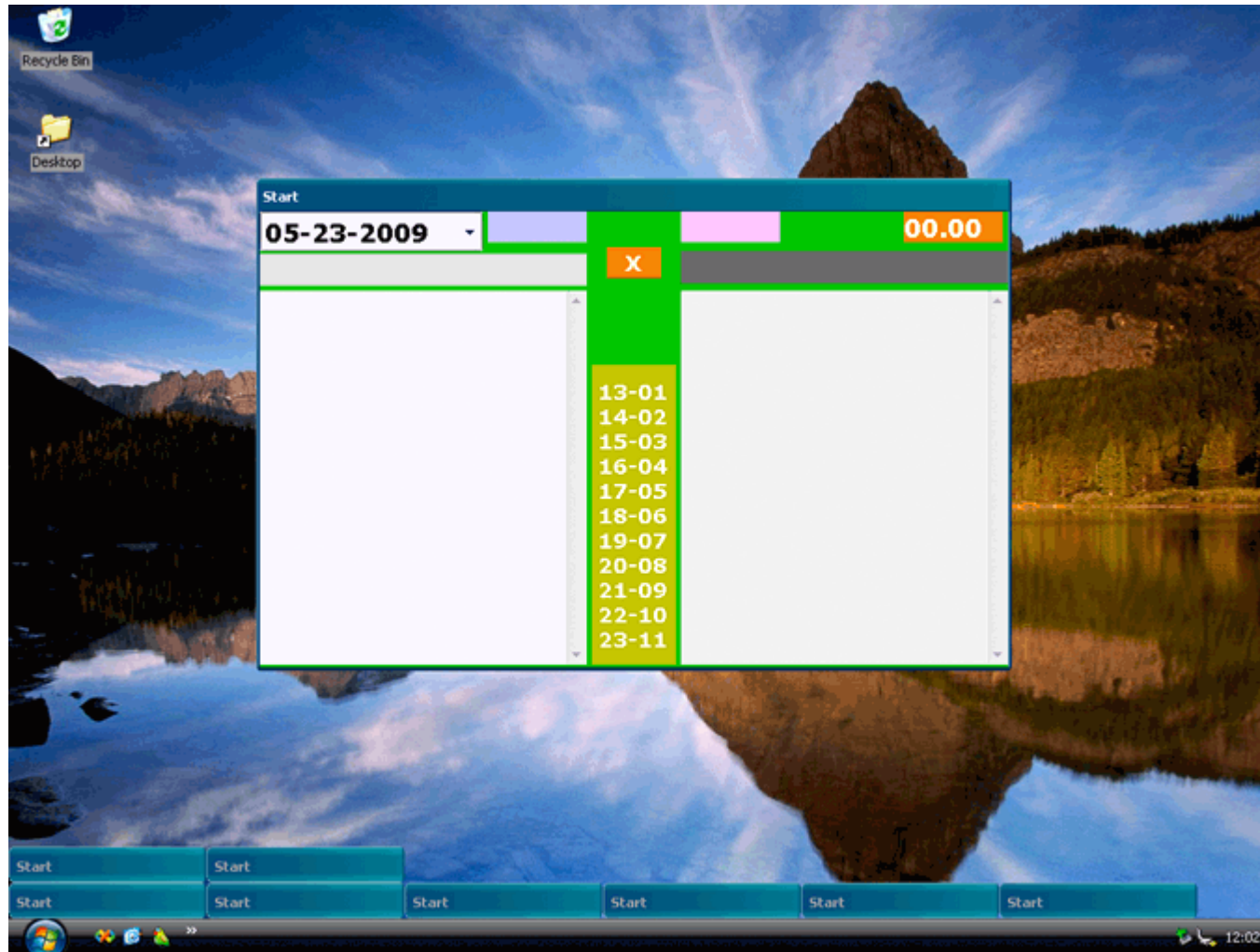


You can simply click the “Desktop” icon on taskbar. Alternatively, you can press **<Win+D>** key.

Tip: **<Win>** is the key, which has the logo of Microsoft.



All the windows will disappear immediately, without leaving any vestige. It is the magic of this software. You do not have to worry about the contents after the disappearance. The contents will remain inside the windows.



After clicking the “Desktop” icon or press **<Win+D>** key again, you can see all the windows for the second time.

Shortcut Key

You can press shortcut keys on your keyboard. Combination keys mean that you keep pressing the first key and then press the second key. For example. **<Ctrl+A>**: Keep pressing **<Ctrl>** key and then press **<A>** key.

<Tab>: Shift the cursor among starting time box, content box, calculator box, and ahead box.

<Ctrl+W>: Enter day of week in the content box.

<Ctrl+R>: Reset the ahead time. Notice that you have to move the cursor inside the ahead box first. It prevents misoperation.

<Ctrl+S>: Save the content.

<Ctrl+M>: Minimize the window.

Security

CE Schedule™ is secure software:

It does not contain any virus, spyware, adware or advertisement. It is clean and pure software.

It does not contain any ActiveX, BHO, toolbar, or other plug-in.

It does not change the homepage or adds contents inside your browser.

It does not use third-party components. All the functions come from original codes.

It does not use Registration Code to lock hardware.

It is totally offline. Anyway, it will not access the Internet for registration, verification, update, upgrade, error report or other purposes.

It does not record your schedules.

It does not run automatically after you start the computer.

It locks itself when running. Virus or hackers cannot use it to attack the computer.

You can install the software (Installation Edition). Definitely, it has to write basic data in the Windows Registry and hard disk. However, the data will be totally removed from Registry and hard disk after uninstallation.

Quality

CE Schedule™ is high quality software:

It does not have any bug, error or loophole. From programming to testing, it has strict quality control. It uses C# 2.0 as the programming language to guarantee the security of memory when the software is running. It will never cause *Memory Leak*.

It works stably. It runs without collapse.

It can control the time accurately.

It works on the background, and does not influence Web pages and other programs at all.

Its interface has been designed carefully. The operating system cannot be hurt even users operate this editor mistakenly and blindly.

It requires a little resources of CPU and memory.

Purchase

This software is not free. Enterprises, governments, commercial organizations and individuals have to pay in order to use this software. However, CE Schedule™ is not conventional software. The following items show the differences.

1. It is one-time license.

You do not have to pay for new versions year by year. This software contains all the fees of future update and upgrade. After purchase, you can get the new versions for free.

2. Individuals do not have amount limitation.

Enterprises have to pay according to the amount of computers. CE has to provide long-term service for employees. This service requires invisible costs. Old employees will leave and new employees will join. As a result, the software can only be sold to enterprises according to the amount of computers. However, individuals do not have the amount limitation. As an individual, you can install unlimited copies for you and your families. The limitation is that you cannot use it for enterprises or in public computers. Except for your families, you cannot transmit it to others people.

3. You do not have to pay online.

You can use cash to pay through banks. You can directly use remittance of cash through banks. As a

result, you do not have to worry about hidden fees or insecure credit card payment online. The Internet is full of spyware and virus. Definitely, you can pay online through your bank if you wish. CE does not use third party tools. It just uses the banking account.

4. You can get long-term technical support.

Software companies just give you an registration code after purchase. They do not know who buy it at all, and only provide short-term supports. Unlike software companies, CE provides long-term technical support and through email after purchase. CE will support your work for long period.

Note: CE works in Beijing, China. The time zone is different. Therefore, CE cannot provide instant support like telephone or MSN. Besides, CE does not employ many people. CE may not reply all the emails within twenty-four hours on working days. Finally, weekend and holidays are not included.

Q: Why the basic information is necessary?

A: It helps CE to recognize you after purchase. CE has to enter your information in the database, and provide technical support for you. Besides, you may get discount in future, if you continue to buy the software of CE.

Q: Can I resell the software to others?

A: No. Anyway, you cannot resell the software after purchase. CE only provides long-term update, upgrade, and technical support for its customers and clients. CE will not serve third-parties.

Q: Can I use it for small office or home office?

A: Yes. It does not limit commercial purpose of individuals. SOHO can be assumed as personal use, although it has commercial factor. You do not have to buy two copies.

To buy this software, you should contact CE through: casualengine@yahoo.com

You can also send your concern about this software to this mailbox. CE will reply them, even you do not buy it finally.

Gmail
by Google BETA

Search Mail Search the Web [Show search options](#)
[Create a filter](#)

Compose Mail

[Inbox](#)
[Starred](#) ★
[Chats](#)
[Sent Mail](#)
[Drafts \(2\)](#)
[All Mail](#)
[Spam](#)
[Trash](#)
Contacts

Chat
Search, add, or invite

Send Save Now Discard Draft autosaved at 8:38 PM (0 minutes ago)

To: casualengine@yahoo.com

[Add Cc](#) | [Add Bcc](#)

Subject: Buy **CE Schedule**

[Attach a file](#)

[Rich formatting »](#)

Company Name:
Address:
Zip:
Amount:

Enterprises should send a simple email to CE like this image. You have to write down the company name, address, and zip code. Vitally, you have to tell CE how many computers you need to use. Later, CE will tell you the sum.

Gmail by Google BETA

Search Mail Search the Web [Show search options](#) [Create a filter](#)

Compose Mail

[Inbox](#) [Starred](#) [Chats](#) [Sent Mail](#) [Drafts \(2\)](#) [All Mail](#) [Spam](#) [Trash](#) [Contacts](#)

Send **Save Now** **Discard** Draft autosaved at 8:38 PM (1 minute ago)

To: casualengine@yahoo.com

[Add Cc](#) | [Add Bcc](#)

Subject: Buy **CE Schedule**

[Attach a file](#)

[Rich formatting >](#)

Full Name:
Address:
Zip:

Chat

Search, add, or invite

Individuals should send a simple email to CE like this image. You should write down your full name, address and zip code.

Note: Please write down your mailing address as clearly as possible. Do include your country.

After receiving the paper contract, CE will tell you the banking account number. Finally, you remit money through your bank. After receiving, CE will allocate an ID for you. You become the official customers or clients of CE. You can use this software officially and forever. Vitally, you can get long-term update, upgrade and technical support. The sample of ID will be: **E0000001-CE Schedule** or **I0000001-CE Schedule**. Everytime, you have to write down this ID in your email to get technical support.

Notice: You need to pay extra money to your bank for the service of remittance or online payment. The fee of this software does not include this extra charge.

Caution: The fee is not refundable for any reason. You must carefully decide whether you need to buy it.

The following information you may need to tell your bank when using remittance.

Intermediary Bank: JPMORGAN CHASE BANK, N.A. NEW YORK

SWIFT BIC: CHASUS33

Web Address: <http://www.jpmorganchase.com/>

Receiving Bank: BEIJING RURAL COMMERCIAL BANK CO., LTD, BEIJING, P.R.CHINA

SWIFT BIC: BRCBCNBJ

Web Address: <http://en.bjrcb.com/>

Account Number of Beneficiary: ***** (CE will tell you later)

Full Name of Beneficiary: Beijing Sound & Bamboo Network Technology Service Center

Address of Beneficiary: Room 307, No.7 Building, Xizhihecun 5-1, Chaoyang, Beijing, P.R.China

Phone Number of Beneficiary: 86-13522031094

Full Name of Remitter: Full Name of Your Company or Your Full Name

Fund Characteristic: Computer relative service

Amount: **US dollars

Remittance Charge: OUR

FAQ

Q: How to use the alarm the same event for several times?

A: This software supports multiple windows. You can start many windows to set the alarms. For example, you have an important meeting. You want it to remind you twenty minutes earlier to prepare the data. Besides, you want it to remind you ten minutes later, so that you can begin going there and waiting. In this case, you can set twenty minutes ahead in one window, and set ten minutes ahead in another window.

Q: Can I change the ahead time after loading the A.txt file?

A: Yes. You can change the ahead time at any time. It is quite flexible. After loading the A.txt file, you can still change it according your need. Later, you can load the A.txt file and reset the default ahead time by pressing **<Ctrl+R>** key, when the cursor is in the ahead box. Alternatively, you can double-click the ahead box.

Q: Does CE Schedule™ reminds me after starting the computer?

A: No. You have to start CE Schedule™ by yourself first, because CE Schedule™ does not start automatically. After starting it, you can minimize the window. Then, the alarm will remind you automatically.

Q: How to delete the files?

A: You have to delete the .rtf files inside the folder of CE Schedule™ in My Documents by yourself. Note that you should also delete the .txt files. You can delete the folder directly, if you do not need all the files inside the folder.

Q: How can enterprises use CE Schedule™?

A: As an enterprise, you may have various projects. Then, you can create the files and write down the data, personnels, projects and end time inside. Also, you may have many meetings. In this case, you can use CE Schedule™ to plan all the meetings.

Q: Why you use .rtf files?

A: RTF files support various formats. You can store data inside directly. Besides, you can edit them anywhere with ease. Vitally, the .rtf files play the role of a database. As a result, you do not worry that the schedule will be lost, once you reinstall the software. Alternatively, you do not have to buy SQL Server or Microsoft Access and connect it with complexity.

Terms of Use

CE Schedule™ END-USER LICENSE AGREEMENT

By using this software, you are agreeing to the terms of this license.

This End-User License Agreement ("EULA") is a legal agreement between you (either an individual or a single entity) and the mentioned Author (Casual Engine) of this Software for the software product identified above, which includes computer software and may include associated media, printed materials, and "online" or electronic documentation ("SOFTWARE PRODUCT"). By installing, copying, or otherwise using the SOFTWARE PRODUCT, you agree to be bounded by the terms of this EULA. If you do not agree to the terms of this EULA, do not install or use the SOFTWARE PRODUCT.

All versions of the SOFTWARE PRODUCT are protected by copyright laws and international copyright treaties, as well as other intellectual property laws and treaties. The sole property belongs to Casual Engine. The SOFTWARE PRODUCT may not be sold in any manner not described herein without the prior written consent of Casual Engine.

1. GRANT OF LICENSE.

This EULA grants you the following rights:

License to.

The SOFTWARE PRODUCT license to enterprises and individuals for commercial and non-commercial purposes. Any purpose of the formal edition, you must purchase from Author before using it.

Installation and Use.

You may install and use an unlimited number of copies of the SOFTWARE PRODUCT for personal and familial use.

Reproduction and Distribution.

You may reproduce and distribute an unlimited number of copies of the SOFTWARE PRODUCT for personal and familial use; provided that each copy shall be a true and complete copy, including all copyright and trademark notices, and shall be accompanied by a copy of this EULA. Copies of the SOFTWARE PRODUCT may not be distributed as a standalone product or service or included with your own product or service. The SOFTWARE PRODUCT may not be included in any free or profit packages or products or service.

2. DESCRIPTION OF OTHER RIGHTS AND LIMITATIONS.

Reverse Engineering, Decompilation, Disassembly and Modification.

You may not reverse engineer, decompile, or disassemble the SOFTWARE PRODUCT and change (add, delete or modify) the resources of the compiled assembly, except and only to the extent that such activity is expressly permitted by applicable law notwithstanding this limitation.

Separation of Components.

The SOFTWARE PRODUCT is licensed as a single product. Its component parts may not be separated for use on more than one computer.

Software Transfer.

You may permanently transfer all of your rights under this EULA, provided the recipient agrees to the terms of this EULA.

Termination.

Without prejudice to any other rights, the Author of this Software may terminate this EULA if you fail to comply with the terms and conditions of this EULA. In such event, you must destroy all copies of the SOFTWARE PRODUCT and all of its component parts.

3. COPYRIGHT.

All title and copyrights in and to the SOFTWARE PRODUCT(including but not limited to any images, photographs, animations, video, audio, music, text, and "applets" incorporated into the SOFTWARE PRODUCT), the accompanying printed materials, and any copies of the SOFTWARE PRODUCT are

owned by the Author of this Software.

4. LIMITED WARRANTY.

NO WARRANTIES.

The Author of this Software expressly disclaims any warranty for the SOFTWARE PRODUCT. The SOFTWARE PRODUCT and any related documentation is provided "as is" without warranty of any kind, either express or implied, including, without limitation, the implied warranties or merchantability, fitness for a particular purpose, or non-infringement. The entire risk arising out of use or performance of the SOFTWARE PRODUCT remains with you.

NO LIABILITY FOR DAMAGES.

In no event shall the Author of this Software be liable for any special, consequential, incidental or indirect damages whatsoever (including, without limitation, damages for loss of business profits, business interruption, loss of business information, or any other pecuniary loss) arising out of the use of or inability to use this product, even if the Author of this Software is aware of the possibility of such damages and known defects.

5. REGISTRATION

No registration of this SOFTWARE PRODUCT is required.

Copyright © Casual Engine. All Rights Reserved.

Contact Us

Registered Name: Beijing Sound & Bamboo Network Technology Service Center

Business Location: Room 307, No.7 Building, Xizhihecun 5-1, Chaoyang, Beijing, China

Zip Code: 100023

Email: casualengine@yahoo.com

You can feel free to send your feedback or suggestion to us. You do not have to write the email as formal as a letter. Besides, you do not have to leave your name. You can simply leave a message like:

CE:

Your content

Epilogue

This software is quite suitable for people to manage the time and schedule well. CE designs the software for human beings, not for robots. It is simple and flexible enough.

CE hopes that it could help enterprises and individuals finish work and enjoy life with high efficiency and methodicalness.

Good Luck!

About Owner

Beijing Sound & Bamboo Network Technology Service Center is a commercial organization, which works in Beijing, China. It was found on October 15, 2008. Before registration in Beijing government, its team has been researching and developing technology over three years. It professionally provides high quality network services and software products.

Currently, it has a Website, which is called *Casual Engine*. This Website specially provides offline network service. Its mission is to reduce the costs of enterprises and individuals. Besides, it creates values for them.

Business License: 110105602133632

Tax Number: 441900198208310031

www.casualengine.com

