

On-Premises Output Time Installation.

Output Time is a web based application, which can be installed in your internal web server & can be accessed from browser in your office network.

To install Output Time web application, you need a WAMP Server/MySQL.

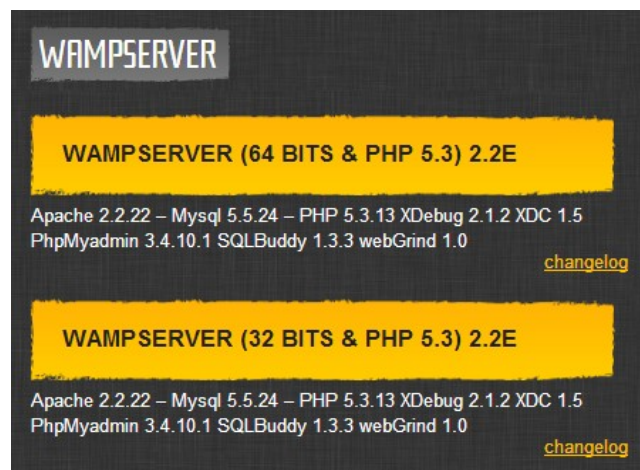
Please follow the details to install Output Time.

For any queries/help in installation, please feel free to contact support@srimax.com. We can also install in your server.

Installing Wamp Server (Apache / Mysql)

Download the installer file for the latest version of WampServer

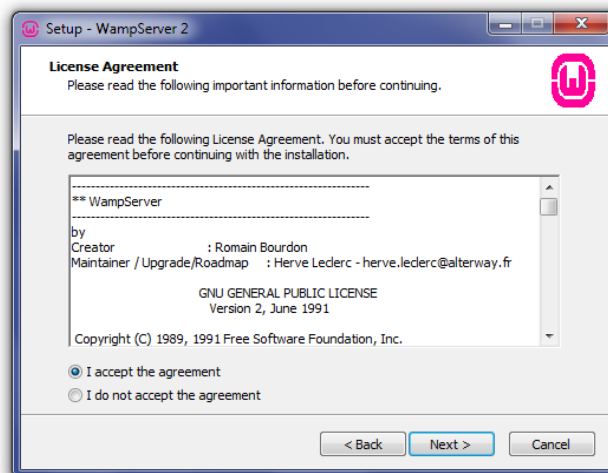
<http://www.wampserver.com/en/#download-wrapper>



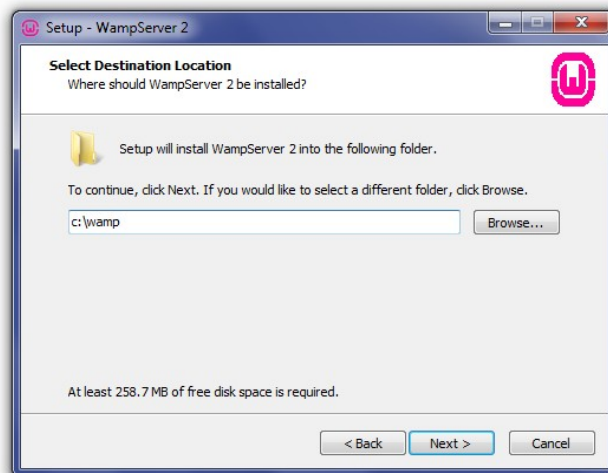
To start the installation process, you need to double-click the installer file and Click Next to continue the installation.



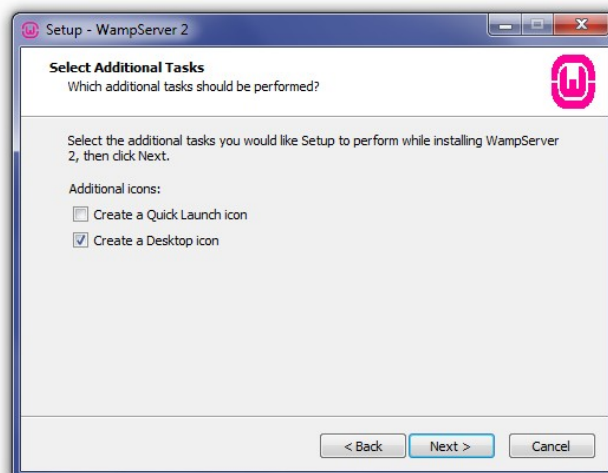
Read the License agreement, check the radio button next to I accept the agreement, then click Next to continue the installation.



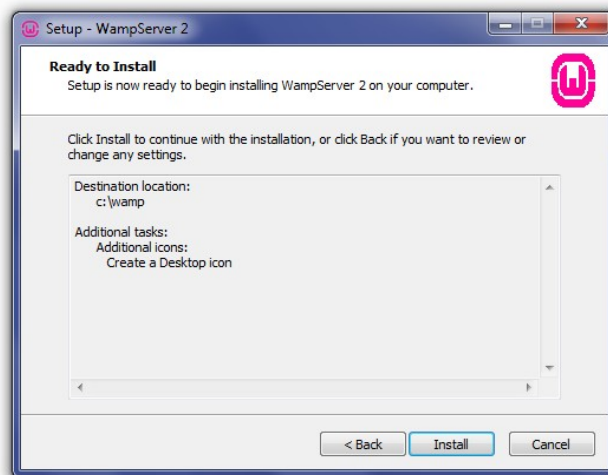
Select Destination to install WampServer in your drive.



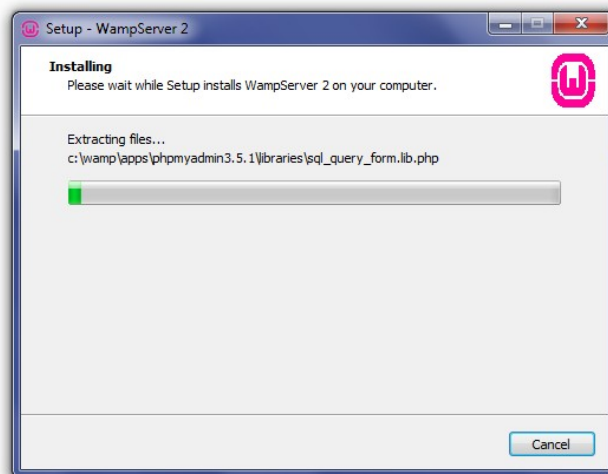
You will be able to select whether you would like a Quick Launch icon added to the taskbar or a Desktop icon created once installation is complete. Make your selections, then click Next to continue.



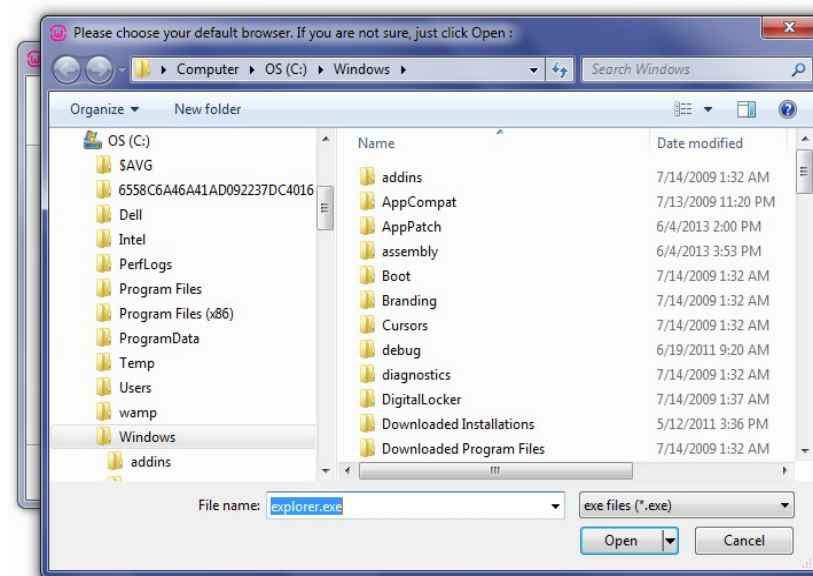
Ready To Install screen where You can review your setup choice and click Install to continue.



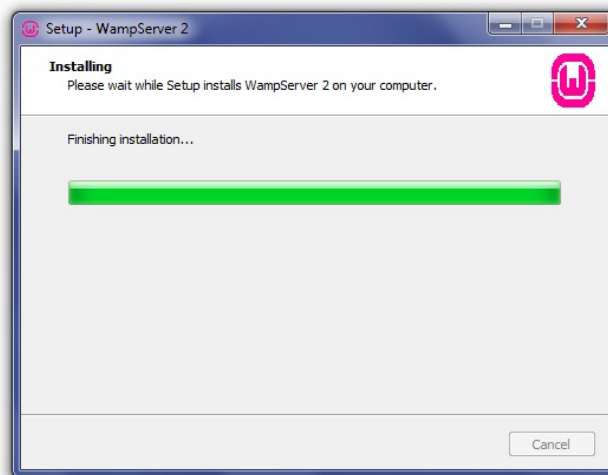
WampServer will begin extracting files to the location you selected.



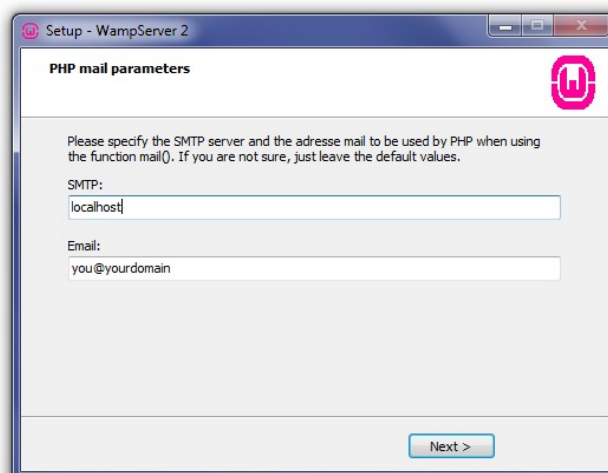
Select your default browser. WampServer defaults to Internet Explorer upon opening the local file browser window.



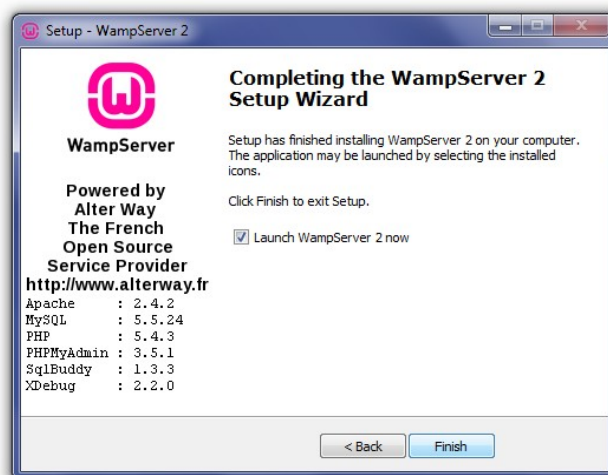
The Setup screen will appear next, showing you the status of the installation process.



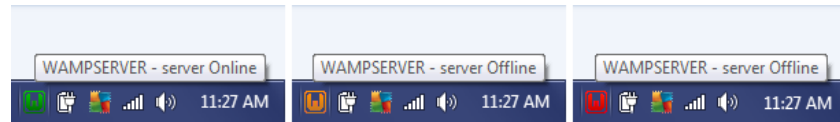
Once the progress bar is completely green, the PHP Mail Parameters screen will appear. Leave the SMTP server as localhost, and change the email address to one of your choosing. Click Next to continue.



The Installation Complete screen will now appear. Check the Launch WampServer Now box, then click Finish to complete the installation.



You should see the WampServer icon appear in the systray on the right side of your taskbar. If the icon is green, then everything is working properly. If the icon is orange, then there are issues with one of the services. If the icon is red, then both Apache and MySQL services aren't running. You will need to resolve those issues before continuing.



Testing WampServer

Once you have completed the installation process, test that your installation is working properly by going to `http://localhost/` in your browser. You should see the WampServer homepage displayed.

The screenshot shows the WampServer homepage. At the top left is the WampServer logo (a pink 'W' inside a circle) and the text 'WampServer'. At the top right, it says 'Version 2.2' and 'Version Française'. Below this is a section titled 'Server Configuration' which includes 'Apache Version : 2.4.2', 'PHP Version : 5.4.3', and a list of 'Loaded Extensions' such as Core, ctype, ftp, mcrypt, Reflection, tokenizer, dom, wddx, apache2handler, mysqli, xdebug, bcmath, date, hash, SPL, session, zip, PDO, xml, mbstring, pdo_mysql, calendar, ereg, iconv, odbc, standard, zlib, Phar, xmlreader, gd, pdo_sqlite, com_dotnet, filter, json, pcre, mysqlnd, libxml, SimpleXML, xmlwriter, mysql, and mhash. Below this is a 'MySQL Version : 5.5.24'. Further down is a 'Tools' section with links to 'phpinfo()' and 'phpmyadmin'. Below that is a 'Your Projects' section. Then a 'Your Virtual Hosts' section. Then a 'Your Aliases' section with links to 'phpmyadmin', 'sqlbuddy', and 'webgrind'. At the bottom, it says 'WampServer - Donate - Alter Way'.

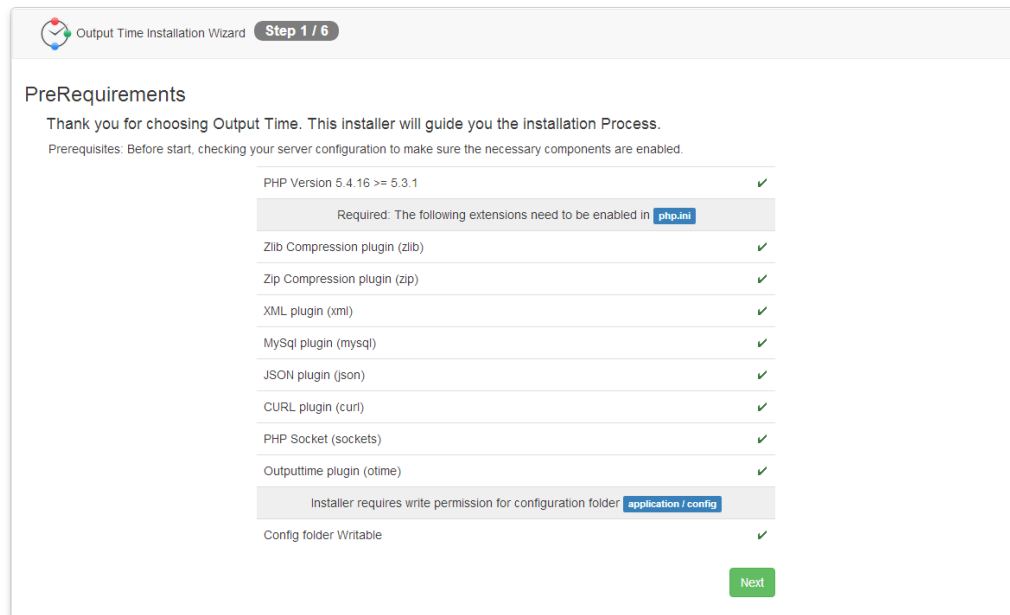
Installing Output Time

Extract the downloaded outputtime zip file and copy the outputtime folder. Then paste it in **C:\wamp\www**. Now open a web browser and go to:

<http://localhost/outputtime/>

Pre-Requirements

Before installation, You should check your server configuration to make sure the below components are enabled.



1. Installer requires write permission for the configuration folder.
2. PHP version should be 5.3.1 and above.
3. You need to enable the PHP extensions in php.ini. Extensions are:
 - a) Zlib Compression Plugin
 - b) Zip Compression Plugin
 - c) XML Plugin
 - d) MySQL Plugin
 - e) JSON Plugin
 - f) Curl Plugin
 - g) PHP Socket
 - h) OutputTime Plugin (You can download the **php_otime.dll** from the link in the installer)

You can copy the .dll file in **:\wamp\bin\php\php5.4.xx\ext** folder (version is depends on your installer)

Add this extension line in **php.ini** { **extension=php_otime.dll** }

```
; XDEBUG Extension

zend_extension = "D:/wamp/bin/php/php5.4.16/zend_ext/php_xdebug-2.2.3-5.4-vc9.dll"

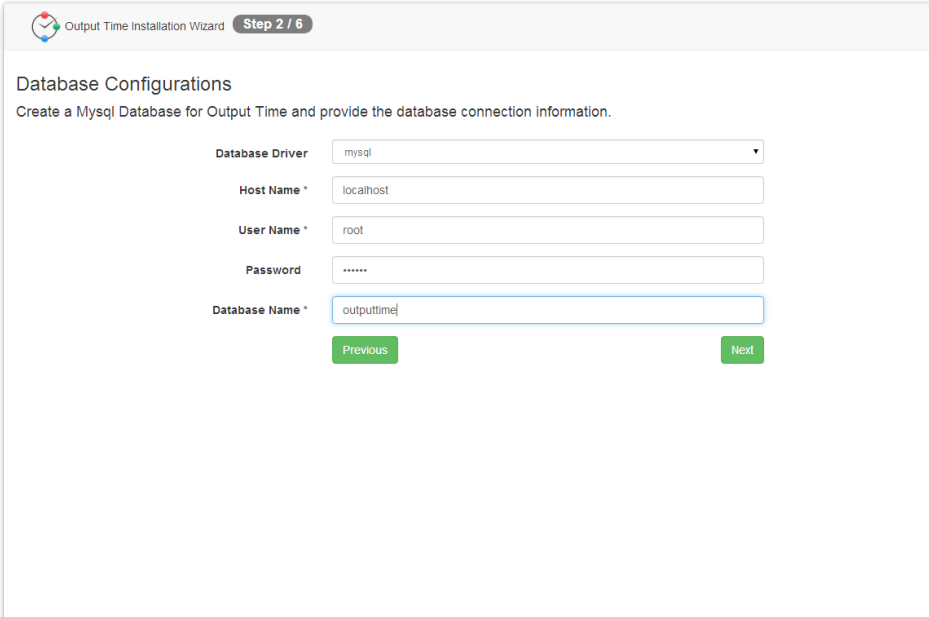
[xdebug]
xdebug.remote_enable = off
xdebug.profiler_enable = off
xdebug.profiler_enable_trigger = off
xdebug.profiler_output_name = cachegrind.out.%t.%p
xdebug.profiler_output_dir = "D:/wamp/tmp"

extension=php_otime.dll
```

After all plugin's are enabled, you should restart Wamp to enable the settings. In Installer home screen all plugins enabled with "Yes" option and Next button is active to move next page of the installer.

Database Configuration

Choose the Data base driver and provide the Host name, User name , Password and Database name.



The screenshot shows the 'Output Time Installation Wizard' at 'Step 2 / 6'. The title is 'Database Configurations'. Below the title, it says 'Create a Mysql Database for Output Time and provide the database connection information.' The form contains the following fields:

- Database Driver:** A dropdown menu with 'mysql' selected.
- Host Name *:** A text box containing 'localhost'.
- User Name *:** A text box containing 'root'.
- Password:** A text box with masked characters (dots).
- Database Name *:** A text box containing 'outputtime'.

At the bottom of the form, there are two green buttons: 'Previous' on the left and 'Next' on the right.

Login Details

Remember the Email and Password which is used to login for the first time as Administrator.

With the Configuration details, you need to provide the License key which is sent in the mail during registration. Copy the License Key from the Mail and update in the text box provided in the installer.

Click on 'Next' and If the License key is valid it move to the next screen.

Output Time Installation Wizard **Step 3 / 6**

Login Details
Please provide the information below to continue you Output Time installation.

Email *

Password *

Confirm Password *

First Name *

Last Name

License Key *

Get license here : <http://www.outputtime.com/index.php/on-premises-register/>

SMTP Details

To configure multiple outbound email settings, you can provide your SMTP details or you can skip this step.

Provide your fully qualified domain name or your SMTP server IP address and your listening Port number.

Provide the login credentials(SMTP User Name and Password) in order to connect to the SMTP server and send the emails.

Click Next.

Output Time Installation Wizard **Step 4 / 6**

Please provide the SMTP details below to send emails via this.

SMTP Host Name


SMTP Port

SMTP User Name

SMTP Password

Finalizing Installation

Verify the details provided for installation and if you want to modify click on Previous. If all details are verified, click on Install to start installation.

 Output Time Installation Wizard **Step 5 / 6**

Finalising Installation


Database Settings		User Details	
Database Driver	mysql	Email	john@gmail.com
Host Name	localhost	Password	*****
User Name	root	First Name	John
Password		Last Name	doe
Database Name	outputtime		

SMTP Settings		License Details	
SMTP Host Name	ssl://smtpout.secureserver.net	License Key	Oc8gdwqvxxLD3mi2K1qeIq6V8fwCBmFLXmrG1r7KAe1Z/hoyKr+DV6e+7tp+z
SMTP Port	465	Company Name	Kidsworld
SMTP User Name	noreply@outputtime.com	Expiry Date	2015-09-25 06:19:46
SMTP Password	*****	Max Users	0

[Previous](#)[Install](#)

Complete Installation

When installation completed Successfully, Congratulations screen will displayed.

 Output Time Installation Wizard - Installed

Congratulations

Your Output Time installation has been completed successfully.

Please make sure to change permission of configuration folder `application/config` to remove write access.


Please rename / remove the `installer.php` file in root directory (or) [Click here to continue](#).

Let's increase our output time!!

In the success screen, you have a link '[Click here to continue](#)' to go to the login screen with the domain URL you configured in the Database.



John



.....

☐ Remember Password

Login

[Forgot Password?](#)

[Register](#)

Login and Get started to manage your office time better