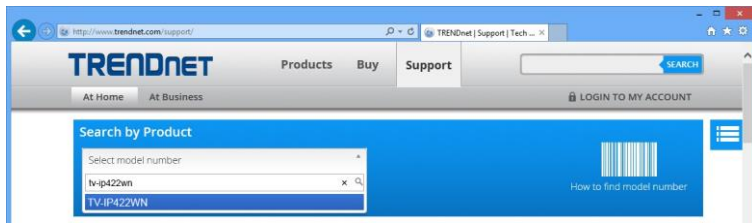



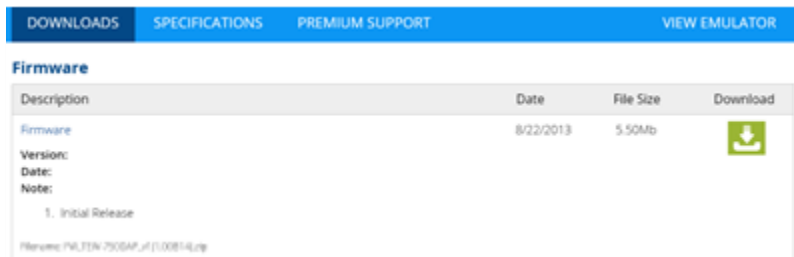
TV-IP422WN Firmware Upgrade Instruction

TRENDnet may periodically release firmware upgrades that might add features or fix problems associated with your TRENDnet model and version. To find out if there is a firmware upgrade available for your device, please check your TRENDnet model and version using the link.

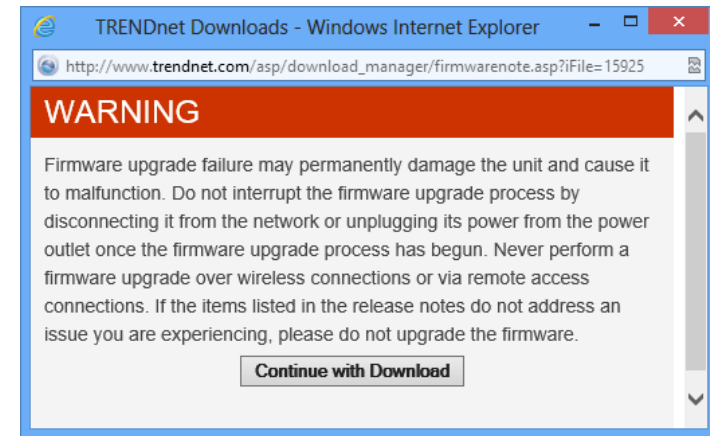
<http://www.trendnet.com/support/>



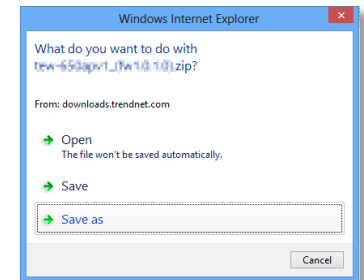
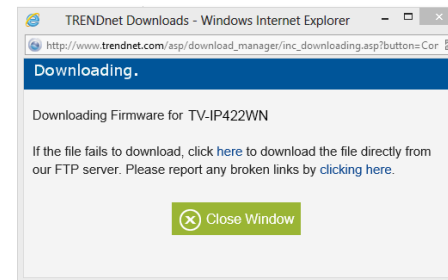
1. If a firmware upgrade is available, download the firmware to your computer by click .

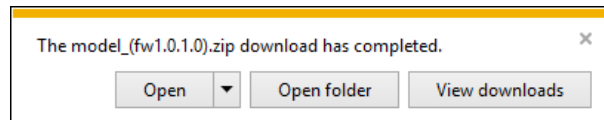
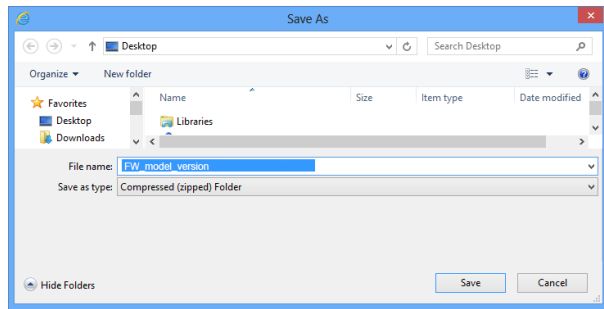


2. Firmware upgrade is an autonomous process which cannot be interrupted. Make sure your power supply and network connection will not be disturbed during firmware upgrade. Click **Continue with Download**.

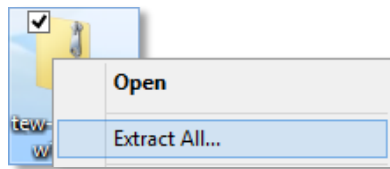


3. Download the file to your computer. Click **Save As**, then choose the folder you want to save the file.





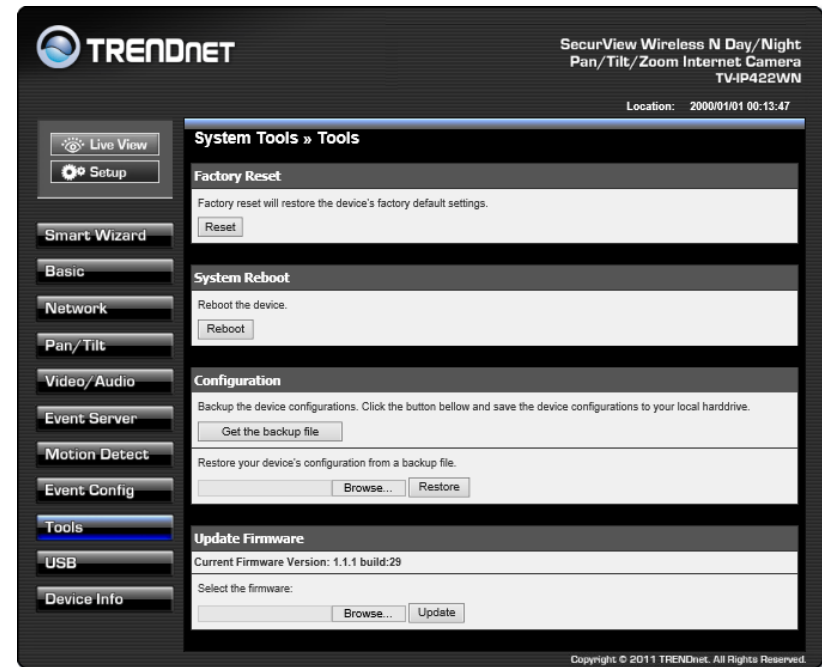
4. Right click on the downloaded file and select **Extract All** or **Extract Here** option. Make sure to remember the location where the extracted file is saved will be saved.



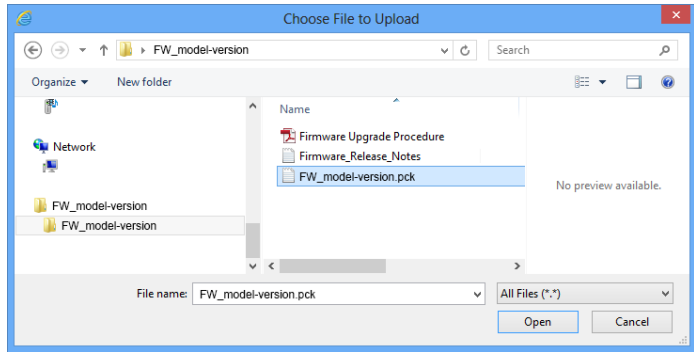
5. Log into the TV-IP422WN with Bonjour, UPnP or the IP address.



6. Click on **Setup > Tools** and then **Upgrade Firmware**



- Click **Browse...** and navigate to the folder on your computer in which the unzipped firmware file (.pck) is.

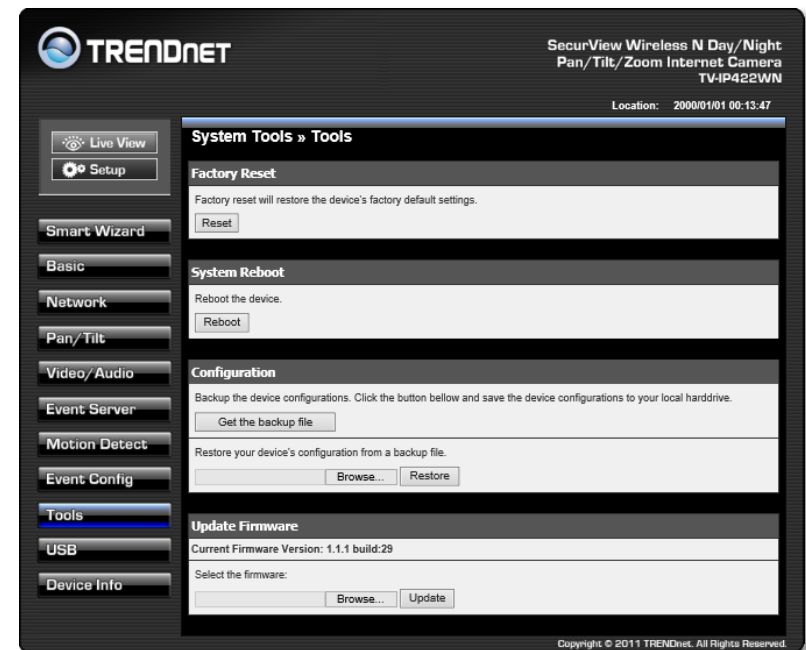


- Located and select it the firmware file. Click **Open**.
- Click **Upload** and wait until the firmware upload completed and the device reboot.
- The firmware upgrade is completed.

Reset to Factory Default Settings

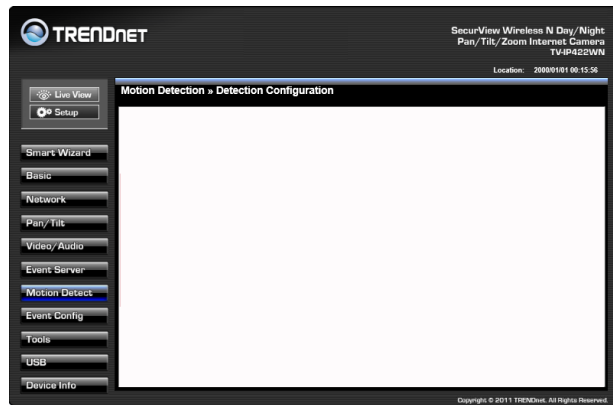
Not all the configuration files can be carried over to different versions of firmware. It is recommended that you reset configurations to the factory default and configure you TV-IP422WN from the fresh start again.

To reset TV-IP422WN configuration back to factory default, click **Reset** in this page. All configurations will be set back to its original default settings.

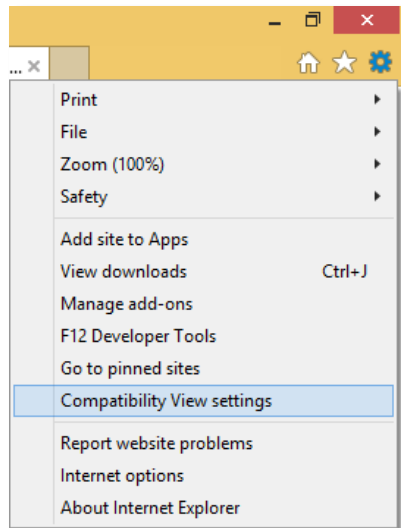


Internet Explorer 11

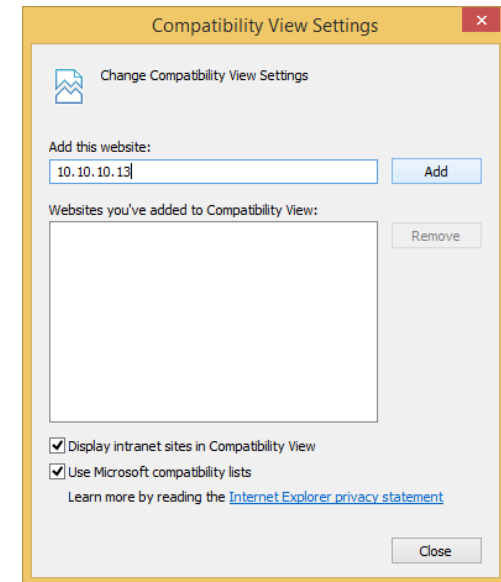
The TV-IP422WN latest firmware supports up to Windows Internet Explorer version 10. For Internet Explorer 11, you have to run the browser in compatible mode.



Open the tool menu by click on the gear icon on the right. Click on **Compatibility View Settings**.

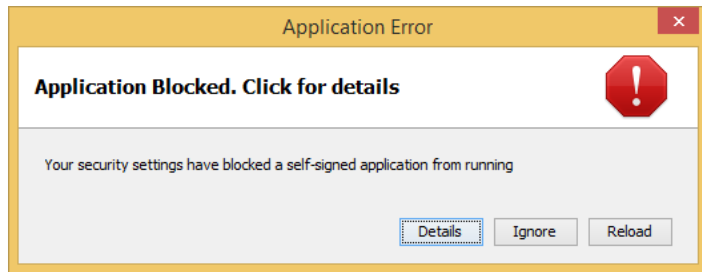


Enter the IP address or URL of your TV-IP422WN then click **Add** to add the view in compatible view.



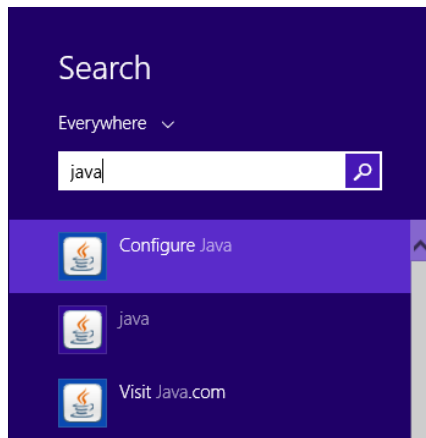
Java Security

The latest java changed its security policy and does not allow the self-signed plug-in running.

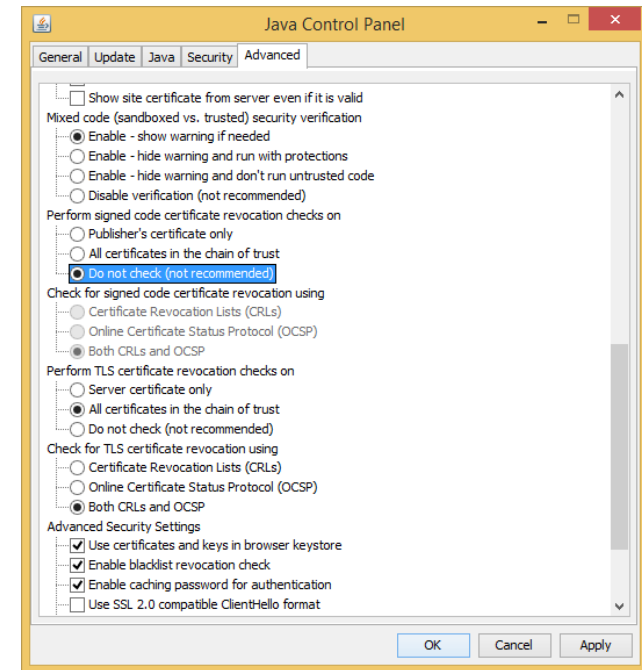


To resolve this issue when you try to change the motion detection settings, please do following.

Find the Java Control Panel by searching the name "java". Click on **Configure Java** to bring out the control panel.



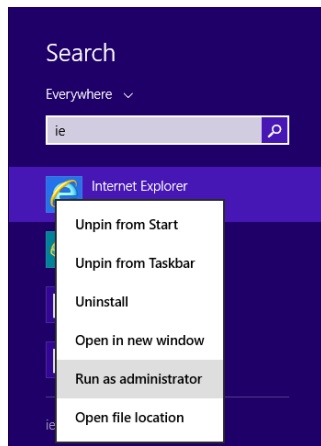
Select the Advanced tab and then change the setting of **Perform signed code certificate revocation checks on** to **Do not check**.



User Account Control

Latest Microsoft Windows introduces the User Account Control (UAC) and may cause some of the features on TV-IP422WN not working properly.

To record the video or making the snapshot to your PC, you need appropriate access right to do that.



Find your Internet Explorer, then right click to bring out the short menu. Then click on **Run as Administrator**. Then, you can have the right to write the file from the camera to your computer.