

The Record Catalogue Manager

Content

1	<i>Introduction</i>	<i>1</i>
	1. Vinyl Catalogue Manager.	1
	2. About OpenVinyl	1

2	<i>WAX - The Main Screen</i>	<i>2</i>
	1. The Main Screen.	2
	2. The Main Menu	3
	3. The Toolbar	4
	4. The Search Field	4
	5. The Alphabar	4

3	<i>WAX - The Details screen</i>	<i>5</i>
	1. The Details Screen	5
	2. The Overview Tab	6
	3. The Tracks Tab	6
	4. The Image Tab	7
	5. The Cover Grading Tab	7
	6. The Vinyl Grading Tab	8

4	<i>WAX - Tools</i>	<i>9</i>
	1. Manage LookUp-List.	9
	2. Import Data.	10
	3. Export Data	11
	4. Backup and Restore	12
	5. Online updates	12

Content

5	<i>OpenVinyl</i>	13
	1. OpenVinyl: More Details	13
	2. Adding a New Record	14
	3. Link to OpenVinyl	14
	4. Sync with OpenVinyl.	15

6	<i>Templating</i>	16
	1. How it works	16
	2. The tags	17
	3. Displaying tracks	18

1 Introduction

1. Vinyl Catalogue Manager

WAX ist the one and only software written especially for vinyl collectors. Besides all the features you would request from a catalogue manager, like insert, edit and delete records, you can store a lot of additional data that describe the state of cover and vinyl.

WAX is user-friendly and extremely easy to use.

Some features

- ◆ Manage unlimited different collections
- ◆ Wax is template-based. Customize the look of the record's detail screen with simple HTML and some special tags.
- ◆ BackUp, Restore, Import and Export
- ◆ Easy updating
- ◆ OpenVinyl-integration

There are a lot of additional tools and features which will ease your collectors life. And more are planned.

2. About OpenVinyl

OpenVinyl.org is an open platform comparable to CDDDB. CDDDB contains track-information for CDs and until now there was no comparable service for vinyl records. OpenVinyl goes much further and stores additional data about the record, the tracks and images of the covers.

OpenVinyl is a very young project and does not contain a lot of records yet. But the tight integration to WAX and it's ease of use might be a strong argument for a fast grow. Read more about OpenVinyl-features in the relevant chapter of this handbook.

2 WAX - The Main Screen

1. The Main Screen

From the main screen you can access all functions and features WAX offers. A lot of these features can be accessed in different ways, for example via menu or keyboard-shortcut.

The screen is divided in a list-part and a details-part. The list-part contains all your records and lists title, catalogue-number, country of origin and the year published.

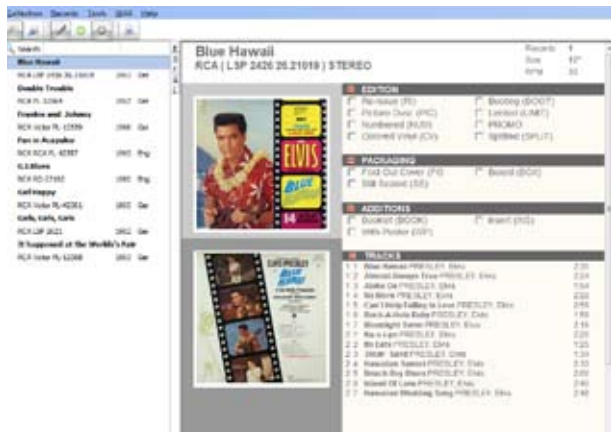
The details-part's view can differ, because it's look and data is template-based. You can create your own templates easily. For more information on templating see the relevant chapter.

SHORTCUTS

Strg+O	Open collection
Strg+C	Close collection
Strg+A	Add record
Strg+E	Edit record

MOUSE ACTIONS

Click	Displays the selected item
DoubleClick	Edit the selected item



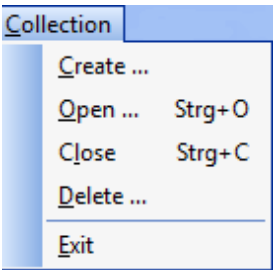
The main screen: List- and details-part

2. The Main-Menu

All functions not directly accesible via shortcut or toolbar can be found in the menu. A detailed description what every function does can be found in the relevant chapter.

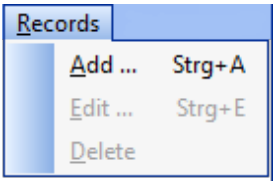
Collection-Menu

- Create collection from scratch
- Open an existing collection
- Close the active collection
- Delete an existing collection
- Exit the application



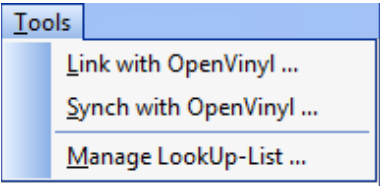
Records-Menu

- Add a new record to collection
- Edit the selected record
- Delete the selected record



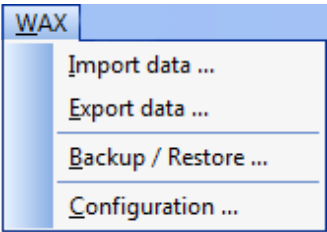
Tools-Menu

- Link record from your collection to the OpenVinyl-database for later syncing
- Sync all linked records with the OpenVinyl-database
- Manage lookup-lists



Wax-Menu

- Import data from an external resource
- Export data to CSV
- BackUp and Restore your collection
- Configure the application



3. The Toolbar

The most often used functions can be accessed via the toolbar.



4. The Search-Field

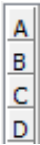
Use the search field to quickly find a record in your collection.



SHORTCUTS	
Strg+S	Go to the search-field


5. Alphabar

The alphabar allows you to quickly jump to the first record beginning with the letter you clicked.



3 WAX - The Details Screen

1. The Details Screen

	ALBUM-TITLE G.I. Blues	CATALOGUE-NR RD-27192	LABEL RCA	RELEASED 1960	COUNTRY Eng	
SUBTITLE	Soundtrack	ARTIST PRESLEY, Elvis	DISCS 1	AUDIO MONO	SPEED 33	SIZE 12"

The details screen contains all informations about your record. On the top you can see the most important record related data containing:

- Record Title and Subtitle
- Label and Catalogue Number
- Year of publication and Country of Origin
- Artist and Genre
- Records Speed, Size and Number
- Audio: Mono, Stereo and Multi

All the rest of data is located in the tabbed pages and contains additional information about the record, tracks and images of front and back cover.

Two tabs are reserved for grading your cover and the vinyl.



The details screen

SHORTCUTS

- | | |
|-------|----------------------|
| Esc | To cancel ol changes |
| Enter | To save all changes |

2. The Overview Tab

The overview tab has on the left checkboxes which describe the record more detailed regarding the edition, the packaging and the additions.

Below you can enter information about the purchase place, the date of the purchase and the price you paid. For statistic reasons you can also enter the estimated value of the record.

You can find the value in different priceguides which are available on the internet or in book form.

EDITION

☐ Re-Issue (RI)

☐ Bootleg (BOOT)

☐ Picture Disc (PIC)

☐ Limited (LIMIT)

☐ Numbered (NUM)

☐ PROMO

☐ Colored vinyl (CV)

☐ Splitted (SPLIT)

PACKAGING

☐ Fold Out Cover (FOC)

☐ Boxed (BOX)

☐ Still Sealed (SS)

ADDITIONS

☐ Booklet (BOOK)

☐ Insert (INS)

☐ With poster (WP)

PURCHASE PLACE

29.12.1999

PRICE

Paid price

0.00

Est. worth from

0.00

to

0.00

The right part of the tab has only overview function and can not be edited here.

It shows the fotos of the cover, the cover- and vinyl-grades and the track information.

If you want to edit this data you have to click on the button or select the appropriate tab.

QUICK OVERVIEW

COVER GRADE

Grade

VINYL GRADE

Grade

TRACKS OVERVIEW

#	T	Title	Artist	Length	Genre
1	2	What's the World's Use	ELVIS PRESLEY, Blue		
2	3	Frankfort Special	ELVIS PRESLEY, Blue		
3	4	Howard Hotel	ELVIS PRESLEY, Blue		
4	5	G.I. Blues	ELVIS PRESLEY, Blue		
5	3	Pocketful of Rainbows	ELVIS PRESLEY, Blue		
6	2	Shopper Around	ELVIS PRESLEY, Blue		
7	3	Big Boss	ELVIS PRESLEY, Blue		
8	4	Don't Ever	ELVIS PRESLEY, Blue		
9	5	Blue Suede Shoes	ELVIS PRESLEY, Blue		Rock&Roll
10	6	Don't Be Crossed	ELVIS PRESLEY, Blue		

Summary of data just for viewing

3. The Tracks Tab

You can perform the following functions: Add, edit and delete a track.

Add Tracks

To add tracks simply fill out the fields below the track list. **Please note:** Side and track numbers will be set by Wax automatically and can not be edited manually. The data entered will be saved upon exit of the genre field. Just press Tab or Enter in the genre field and the data will be added to the table, entry fields cleared and track number increased.

To start a new side press CTRL & + which will increase the side number by one. Pressing CTRL & - will decrease side number by one.

Edit Track

To edit a track just double click the record. Saving will be done as in adding when leaving the genre field.

Delete Track

Select the track you want to delete and press CTRL & DEL. This will delete a track without confirmation. Please use carefully.

SHORTCUTS

Strg+'+'
Strg+'-'
Strgl+Del

Increase side number by one
Decrease side number by one
Delete selected track

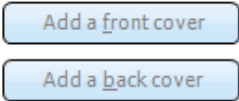
MOUSE ACTIONS

DbfClick

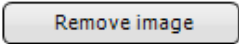
Edit selected track

3. The Images Tab

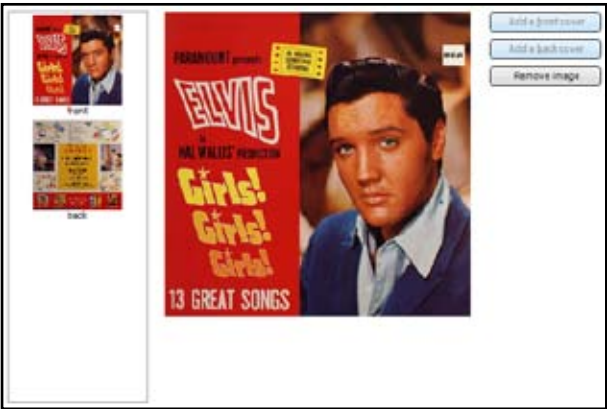
You can add a front and back cover of your record easily by clicking on the following buttons:



To remove an image simply press the following button:



Removing an image deletes the file. If you do not have a copy of the file in another place - use this function wisely.



Images Tab

4. The Cover Grading Tab

Grading your record is a science for itself. There are various ways to grade the cover and the vinyl. Some people use a number-based system like 0 to 10 for bad to very good, but the most common used grading system is the Goldstein-grade-system.

Wax uses this system and makes a recommendation what grade to choose based on some criterias you have to enter.

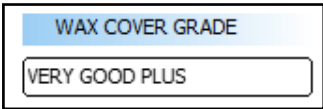
The criterias are:

- Ringwear
- SeamSplit
- Aging / Look
- Corners
- Other details like CutOut, TESA on cover and more.



Cover grading criterias

Editing those criterias will change the recommended grade and display it.



Recommended Grade

Please note: The recommendation is NOT the final grade. It just works as a help. To finish and store the grade you have to choose the grade manually.

This allows professional users to skip the criteria part and enter the grades directly and also allows to fine tune the grade.

COVER GRADE

VERY GOOD

Criteria

- Tiny seam slit

- Ring-wear with Ink-wear

- No water-damage

- No taped seams

- Small writing on cover

- Yellowish

5. The Vinyl Grading Tab

Grading the vinyl works almost the same like grading the cover. All you have to know is that visual grading is inferior to audio grading and it's sufficient to choose one of the grading types.

Audio grading will always be treated as more reliable.

VINYL VISUAL GRADE

Perfect

- Slightly visible scuffs (max 10%)

- Minor, stuffy, very light scratches, great luster, but flaws (max 30%)

- Still played with luster, scuffs, scratches

- Scratches (feelable with finger)

Not Graded

VINYL AUDIO GRADE

Perfect

- Plays MINT

- Plays NM

- Audible crackle, surface noise between tracks and low musical passages

- Crackle, surface noise, clicks, NO SKIPS

Not Graded

DESCRIPTION VINYL

Edge warp (EW)

Slight edge warp (SEW)

No affect playing (NAP)

Needs wash (NW)

Played wet (RPV)

DESCRIPTION LABEL

Writing on label (WOL)

TESA on label (TOL)

Sticker on label (SOL)

Light center damage (LCD)

Vinyl grading criterias

4 WAX - Tools

1. Manage the LookUpList

It is a very difficult task to keep data consistency in your collection. This signifies that all labels, genre and artists are written exactly the same where ever they show up.

Example of variations of an artist name:

- PRESLEY, Elvis
- Elvis Presley
- PRESLEY, Elvis A.

WAX helps you with LookUp-lists when entering a new record with auto completion. But if you imported your collection to WAX then the LookUp-list manager will be a great help to clean your data.

First you have to choose which list you want to edit. Pick the list from the dropdownlist.

In our example on the right we chose the label-list and all entries will be displayed alphabetically.

You can see now easily that the „Cramned Discs“-label exists in your database in two variations - one of them false, due to a type mismatch.

To solve this problem, choose the entry to be edited and it will appear in the field on the right. Now correct the value and press the go-button. All entries will now be replaced from „Cramned Discs“ to the correcter version „Crammed Discs“ in your database .

LookUp-Manager

Replace all entries in your database

2. Import Data

IMPORT-SETTINGS

Choose file

FIELD-SEPARATOR

☐ Tab

☐ Space

☐ Other

☒ Comma

☐ Semicolon

FIELD-DELIMITER

☒ "

☐ '

☐ Other

☒ First line contains field-names

DATA-PREVIEW

cat	title	subtitl
cat	title	subtitle
825 261-1	A nous les garcons	
9101 028	A nous les petites anglaises !	
925-826-1	Abenteuer des Baron Münchhausen, Die	

ASSING DATA TO FIELDS

artist

label

country

year

genre

Add

artist

label

country

year

genre

records

speed

size

audio

price

pricecurrentfrom

pricecurrentto

buydate

buyplace

RI

ROOT

ASSIGNED

cat = cat

title = title

subtitle = subtitle

Remove

Import

Finish

WAX allows you to import CSV-data. This format is widely supported by a lot of software from database- to spreadsheet-applications.

Start by choosing the file you want to import. CSV-files usually have the extension .txt or .csv.

Now you have to select the field-separator and the field-delimiter. You can check the results of you choice immediately in the data-preview-grid.

Check the checkbox if the firstline of your data contains the fieldnames. This makes the linking of the fields much easier. Now you're already half trough.

Next you have to assign the field-names of your import file to the field-names in the WAX-database. To link two fields select one from the left and one from the right list and click the add-button. All assigned fields will show in the list below.

To finish the import process click the Import-button.

Note: Importing is very complex, because each software can uses different data-types for the information. For example a ,1' can be treated as a string or as a number. If you face problems importing your data, please contact customer support.

3. Export Data

CHOOSE FIELDS TO EXPORT

Records

records
speed
size
audio
price
pricecurrentfrom
pricecurrentto
buydate
buyplace
RI
BOOT
BOOK
BOX
SPLIT
INS
WP
FOC
PIC

>

<

cat
title
subtitle
artist
label
country
year
genre

EXPORT-SETTINGS

FIELD-SEPARATOR

☐ Tab

☐ Space

☐ Other

☒ Comma

☐ Semicolon

FIELD-DELIMITER

☒ "

☐ '

☐ Other

☒ First line contains field-names

Save to

D:\Michael Lurie\Desktop\Export.txt

Export

Finish

Exporting data from WAX is easy. You can export data from the records database and data from the tracks database, but not mixed.

First choose the table to export from the dropdown-list.

Then select the fields you want to be exported.

In the „Export Settings“ you have to define the field-separator and the field-delimiter. The default values of the settings usually work fine. Change only if you know what you’re doing.

If you want WAX to add all field-names in the first line then check the relevant checkbox.

Finally select where the export-file should be saved and press the export-button to start the process.

4. Backup and Restore

Backup and restore is rather straight forward and very easy. The database file and optionally all images will be added to a ZIP-file.

BackUp

Choose the database you want to backup by checking it from the list. You can backup several databases: All data will be stored in separate files.

Now choose the directory where the backup-file will be stored. By clicking the „include pictures“ checkbox you tell WAX to add pictures to the backup.

The backup-file will be named automatically as the database-name. If you want a better overview, you can make WAX adding the current date to the file-name.

Click Backup to execute.

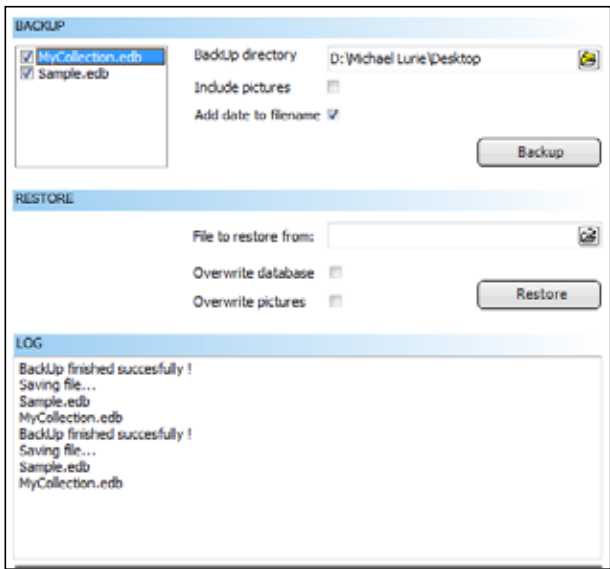
Restore

Select an earlier backup-file to restore. Use the checkboxes to tell WAX to overwrite an existing database or existing pictures.

Restore saves the database and the images to the path defined in your configuration.

5. Online updates

Online updates are wizard guided and self-explaining. Just follow the instructions of the update-wizard.



Backup and Restore-Screen

5 Open Vinyl

1. OpenVinyl: More Details

The main idea behind OpenVinyl is to ease vinyl collectors life and reduce the amount of work for entering records to your database. OpenVinyl provides



not only record relevant data, but also cover images and special info about packing, edition and additions.

To see what fields are connected to OpenVinyl check the „Show- Fields“-checkbox on the bottom of the details-screen.


At the same position you can also see the OpenVinyl-ID if already assigned and the date of the last lookup.

WAX integrates very tightly with OpenVinyl although OpenVinyl is not very widely supported yet.

You can retrieve and post data directly with WAX.

Please note: All data on OpenVinyl is user contributed and its up to the user the respect copyrights and the data guidelines. When posting your data make sure everything is correct.

Read more about OpenVinyl on: www.openvinyl.org

 **-ID:** 544 Last lookup:

☐ Show Fields Connected to OpenVinyl

2. Adding a New Record

To add a record with OpenVinyl-support enter the title and / or the catalogue-number into the fields.

Now click the OpenVinyl-button on the bottom of the details screen.



WAX will not query the OpenVinyl-database and depending on the records found react differently:

- No record in the database: WAX will ask you, if you want to auto-add the data you enter manually to the OpenVinyl-database.
- One or more matches found: Wax will show the following screen to allow you to choose the correct record. You can cancel the entry or click auto-add if the record is not in the list and you want to post the data on OpenVinyl after enterign automatically.

cover	title	cat	label	artist	year	country
	Earth-Girls are easy	825835-1	SON		1987	Ger
	Girls	3383 671	Polydor		1988	Ger
	Girls Just Want To Have Fun	824 538-3	Mercury		1985	Hel
	Girls, Girls, Girls	137 2631	RCA	FREDDY, Glee	1962	Ger
	Modern Girls	9 21526-1	Warner Bros		1986	USA
	Punk Punk Girls, The	T-467 (D686)	20th Century Fox		1975	USA
	Private School for Girls	36505	MCA		1983	USA
	Reform School Girls	63NP 73332	MFPB		1986	USA

ChooseAuto addReset

Choose the correct record for adding

3. Link to OpenVinyl

If you have already some records in your database or have imported your database to WAX then you can link those entries to OpenVinyl.

First choose a number of records to compare. Keep the number low - this function is rather time-consuming.

Search for linkable entries

Max. entries to scan

20

Start

Link checked entries

As the result you will get a list that could look like the following. On the left are your records with the catalogue-number and the unique-id in the database. On the right you have depending on the result of the query the following information and possibilities:

- Exact match: The records title, catalogue-number and OpenVinyl-id for visual comparison. Check the checkbox to confirm this entry to be linked.
- No match found (red lines): Do you allow WAX to auto-add your entry to OpenVinyl ? If so, check the checkbox.
- More than one match (red lines): OpenVinyl has more than one result. Doubleclick the record to choose the correct record. The screen is the same as when adding a new record.

To link the checked entries click the „Link checked entries button“.

457	Escape from New York (GTV	=	More than 1 results. Please	???	
475	Falcon Summer Sky ()	=	Auto-Add	???	<input type="checkbox"/>
559	Ghostbusters: Picture Disc ()	=	Auto-Add	???	<input type="checkbox"/>
566	Give'em Hell, Harry ! ()	=	Auto-Add	???	<input type="checkbox"/>
637	Haviks (837 264-1)	=	Haviks (837 264-1)	637	<input type="checkbox"/>
638	He's my Girl (147.325)	=	He's my Girl (147.325)	638	<input type="checkbox"/>
639	Head (RD 8051)	=	Head (RD 8051)	639	<input type="checkbox"/>
640	Heartbreak Hotel (8533-1-R)	=	Heartbreak Hotel (8533-1-R)	640	<input type="checkbox"/>

6 Templating

1. How it works

Templating is HTML-based and very easy to use. To create a new template by yourself, you have to do the following steps:

1. Create a subfolder in the template-folder with the name of the new template. You found the right folder if there is already a sub-folder called „default“ in it. Usually you find the folder in the root-directory of the WAX-application.

Example:

C:\WAX\templates\your_template_dir

2. The following files have to be in the template-dir:

- The html-template-file itself. It has to have the same name as the directory plus the html-extension.
- An image which will be displayed, when no cover-image exists. It has to be called: **EmptyRecord.png**

3. Create an HTML-file and name it the same as the template-dir plus the „.html“-extension.

Example:

/your_template_dir/ your_template_dir.html

4. Now design the template the way you want. Data will be inserted by replacing some special tags that you can add to the source of your html-file. Place all necessary files like graphics into the same directory. Sub-dirs are not allowed.

Note:

If you use graphics then make sure that you add a `<%tplpath%>`-tag in front of the graphics-name.

Example:

```

```

Example: Covers don't need the tplpath-tag

```

```

2. The tags

Tag	Output (Text)
<%title%>	Record title
<%subtitle%>	Record Subtitle
<%label%>	Record label
<%cat%>	Catalogue-nr.
<%year%>	Year of release
<%country%>	Country of manufacture
<%buydate%>	Date of purchase
<%records%>	Number of discs
<%audio%>	MONO, STERO, MULTI
<%speed%>	33, 45, 78
<%size%>	7“, 10“, 12“
<%artist%>	Artist
<%buyplace%>	Purchase location
<%price%>	Paid price
<%gradecover%>	The grade of the cover
<%gradevinyl%>	The grade of the record
<%tplpath%>	Path to the template-dir

Tag	Output (Graphic)
<%covfront%>	Front cover
<%covback%>	Back cover

Tag	Output (Checkbox)
<%ri%>	Record title
<%pic%>	Record Subtitle
<%num%>	Record label
<%cv%>	Catalogue-nr.
<%boot%>	Bootleg

Tag	Output (Checkbox)
<%limit%>	Limited edition
<%spli%>	Split record
<%box%>	Boxed
<%foc%>	Foldout-cover
<%book%>	Includes booklet
<%insert%>	Includes insert
<%wp%>	Includes poster
<%co%>	Cut out
<%rw%>	
<%ssp%>	
<%ts%>	Taped seam
<%woc%>	Writing on cover
<%soc%>	Sticker on cover
<%tpoc%>	TESA on cover
<%stoc%>	Stamp on cover
<%toc%>	Tear on front
<%gr%>	Glue rest
<%ew%>	Edge warp
<%sew%>	Slight edge warp
<%nap%>	No affect playing
<%rpw%>	Record played wet
<%nw%>	Needs wash
<%wol%>	Writing on label
<%sol%>	Sticker on label
<%tol%>	TESA on label
<%lcd%>	Light center damage

3. Displaying tracks

To display tracks you have to make sure, that:

- 1. All template-data regarding the track have to be on **one** line and
- 2. the first tag on the line has to be the <%tracks%>-tag.

The tracks-tag tells the software that the whole content of the current line has to be repeated until all tracks have been displayed.

The rest of the line can contain the tags listed on the right embedded in standard html-code.

Sample: Display tracks in a table

```
<table>
<tr><td>side</td><td>title</td>
<%tracks%><tr><td><%side%></td><td><%title%></td>
</table>
```

Tag	Output (Text)
<%side%>	Side-Number
<%track%>	Track-Number
<%title%>	Song-title
<%artist%>	Artist
<%length%>	Playing time
<%genre%>	Tracks genre